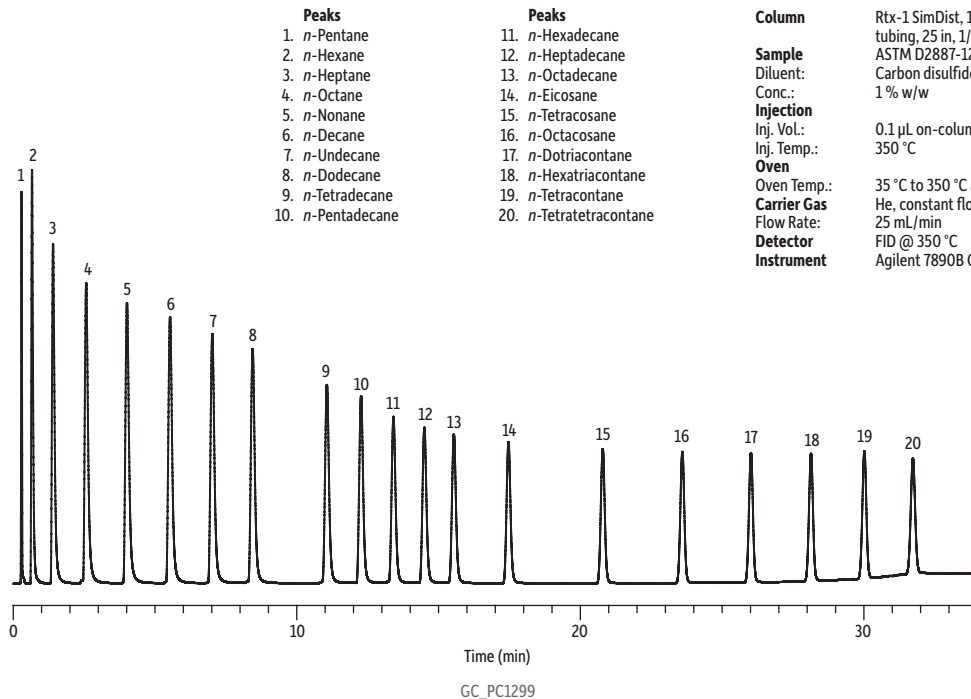


Simulated Distillation on Rtx-1 SimDist DiatoSorb-WHP by ASTM D2887



Column Rtx-1 SimDist, 100/120 mesh on DiatoSorb-WHP, SilcoSmooth tubing, 25 in, 1/8 in OD, 2.0 mm ID

Sample ASTM D2887-12 calibration standard (cat.# 31674)

Diluent: Carbon disulfide

Conc.: 1 % w/w

Injection

Inj. Vol.: 0.1 µL on-column

Inj. Temp.: 350 °C

Oven

Oven Temp.: 35 °C to 350 °C at 10 °C/min (hold 5 min)

Carrier Gas He, constant flow

Flow Rate: 25 mL/min

Detector FID @ 350 °C

Instrument Agilent 7890B GC