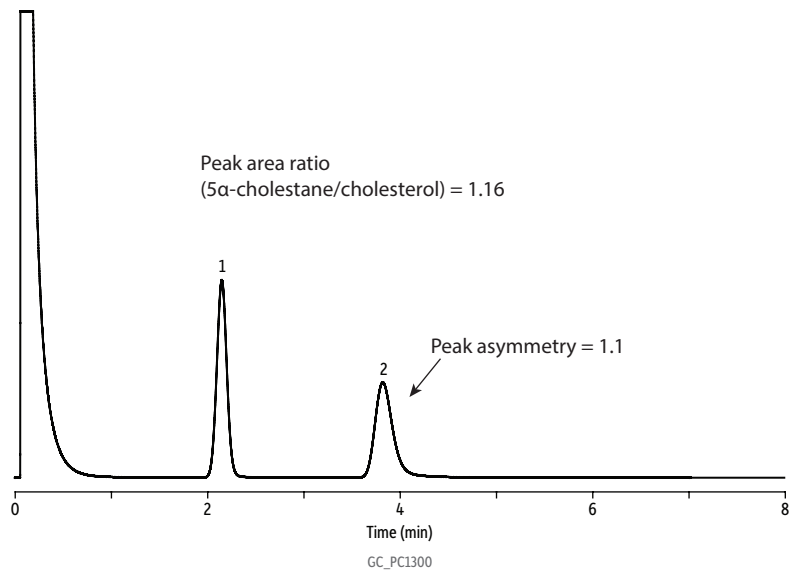


## Cholesterol and 5 $\alpha$ -Cholestane On Diatosorb-WHP Packed Column



### Peaks

1. 5 $\alpha$ -Cholestane
2. Cholesterol

### Column

3% OV-101, 100/120 mesh on DiatoSorb-WHP,  
SilcoSmooth tubing, 1 m, 1/8 in OD, 2 mm ID

### Sample

Diluent: Chloroform  
Conc.: 1,000  $\mu$ g/mL

### Injection

Inj. Vol.: 1.0  $\mu$ L on-column  
Inj. Temp.: 220  $^{\circ}$ C

### Oven

Oven Temp.: 250  $^{\circ}$ C (hold 8 min)

### Carrier Gas

He, constant flow

Flow Rate: 4.0 mL/min

Detector: FID @ 260  $^{\circ}$ C

Instrument: Agilent 7890B GC

### Notes

Column inertness results in symmetrical peak shape and almost no adsorption of active compounds.