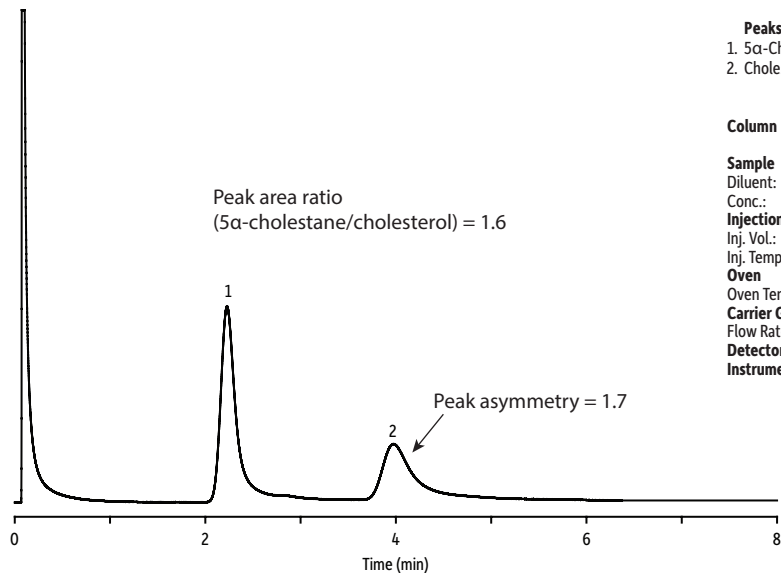


## Cholesterol and 5 $\alpha$ -Cholestane On Diatomaceous Earth Material Packed Column (Competitor B)



GC\_PC1302

### Peaks

1. 5 $\alpha$ -Cholestane
2. Cholesterol

### Column

3% OV-101, 100/120 mesh on diatomaceous earth WHP type material, glass column, 1 m, 1/4 in OD, 2 mm ID

### Sample

Cholesterol, 5 $\alpha$ -cholestane

### Diluent:

Chloroform

### Conc.:

1,000  $\mu$ g/mL

### Injection

#### Inj. Vol.:

1  $\mu$ L on-column

#### Inj. Temp.:

220  $^{\circ}$ C

### Oven

#### Oven Temp.:

250  $^{\circ}$ C (hold 8 min)

### Carrier Gas

He, constant flow

### Flow Rate:

40 mL/min

### Detector

FID @ 265  $^{\circ}$ C

### Instrument

Agilent 7890B GC