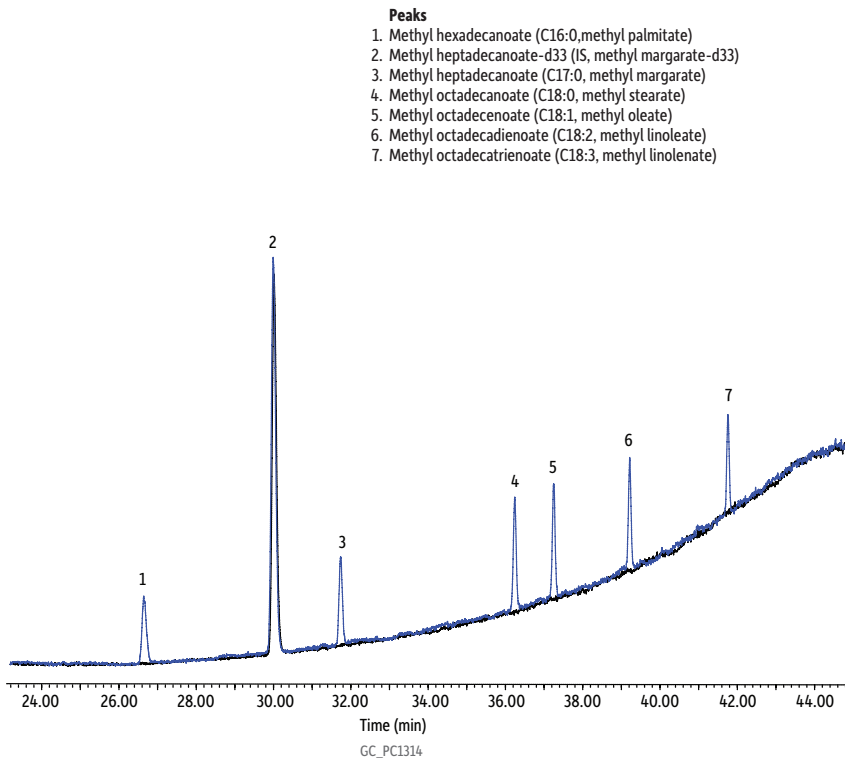


## Overlay of Blank and 2 mg/kg FAME Standard on Stabilwax



**Column** Stabilwax, 60 m, 0.25 mm ID, 0.50  $\mu$ m (cat.# 10641)  
**Sample** Methyl palmitate (cat.# 35048)  
 Methyl heptadecanoate (cat.# 35050)  
 Methyl stearate (cat.# 35051)  
 Methyl oleate (cat.# 35052)  
 Methyl linoleate (cat.# 35053)  
 Methyl linolenate (cat.# 35054)

**Diluent:** *n*-Dodecane  
**Conc.:** 2 mg/kg

**Injection**  
**Inj. Vol.:** 1  $\mu$ L splitless (hold 1 min)  
**Liner:** Premium 4 mm single taper w/wool (cat.# 23303.5)  
**Inj. Temp.:** 260 °C  
**Purge Flow:** 100 mL/min

**Oven**  
**Oven Temp.:** 150 °C (hold 5 min) to 200 °C at 12 °C/min (hold 17 min) to 252 °C at 3 °C/min (hold 10 min)

**Carrier Gas**  
**Flow Rate:** He, constant flow  
 0.8 mL/min

**Detector**  
**Mode:** MS  
**Scan Program:** Scan

Group	Start Time (min)	Scan Range (amu)	Scan Rate (scans/sec)
1	20	33-320	4.8

**Transfer Line**  
**Temp.:** 260 °C  
**Analyzer Type:** Quadrupole  
**Source Type:** Extractor  
**Extractor Lens:** 9 mm ID  
**Source Temp.:** 300 °C  
**Quad Temp.:** 180 °C  
**Electron Energy:** 70 eV  
**Solvent Delay**  
**Time:** 20 min  
**Ionization Mode:** EI  
**Instrument** Agilent 7890B GC & 5977A MSD