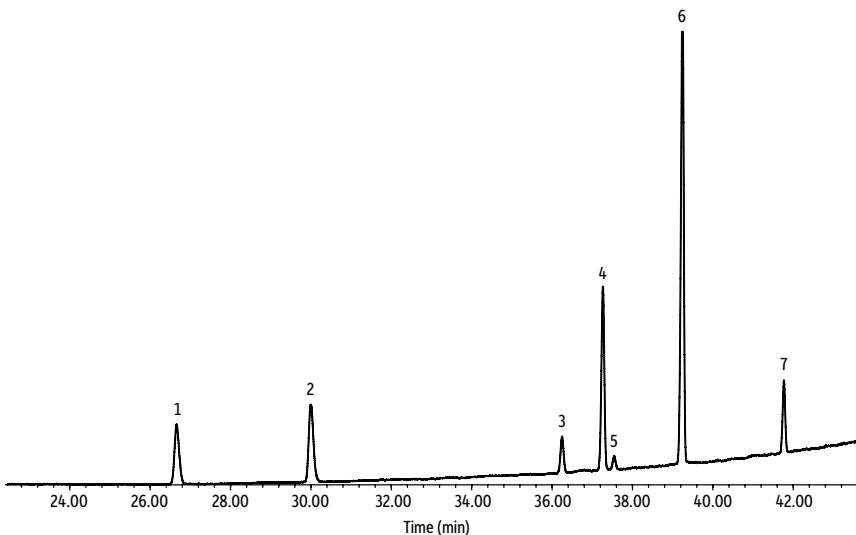


Soy Biodiesel B100 on Stabilwax

Peaks

1. Methyl hexadecanoate (C16:0, methyl palmitate)
2. Methyl heptadecanoate-d33 (IS, methyl margarate-d33)
3. Methyl octadecanoate (C18:0, methyl stearate)
4. *cis*-Methyl octadecenoate (C18:1, methyl oleate)
5. *trans*-Methyl octadecenoate (C18:1, methyl oleate)
6. Methyl octadecadienoate (C18:2, methyl linoleate)
7. Methyl octadecatrienoate (C18:3, methyl linolenate)



GC_PC1315

Column Stabilwax, 60 m, 0.25 mm ID, 0.50 μ m (cat.# 10641)
Sample Soy biodiesel (B100)
Diluent: Isooctane
Conc.: 85 mg/kg
Injection
Inj. Vol.: 1 μ L splitless (hold 1 min)
Liner: Premium 4 mm single taper w/wool (cat.# 23303.5)
Inj. Temp.: 260 °C
Purge Flow: 100 mL/min
Oven
Oven Temp.: 150 °C (hold 5 min) to 200 °C at 12 °C/min (hold 17 min) to 252 °C at 3 °C/min (hold 10 min)
Carrier Gas He, constant flow
Flow Rate: 0.8 mL/min
Detector MS
Mode: Scan
Scan Program:

Group	Start Time (min)	Scan Range (amu)	Scan Rate (scans/sec)
1	20	33-320	4.8

Transfer Line Temp.: 260 °C
Analyzer Type: Quadrupole
Source Type: Extractor
Extractor Lens: 9 mm ID
Source Temp.: 300 °C
Quad Temp.: 180 °C
Electron Energy: 70 eV
Solvent Delay
Time: 20 min
Ionization Mode: EI
Instrument Agilent 7890B GC & 5977A MSD