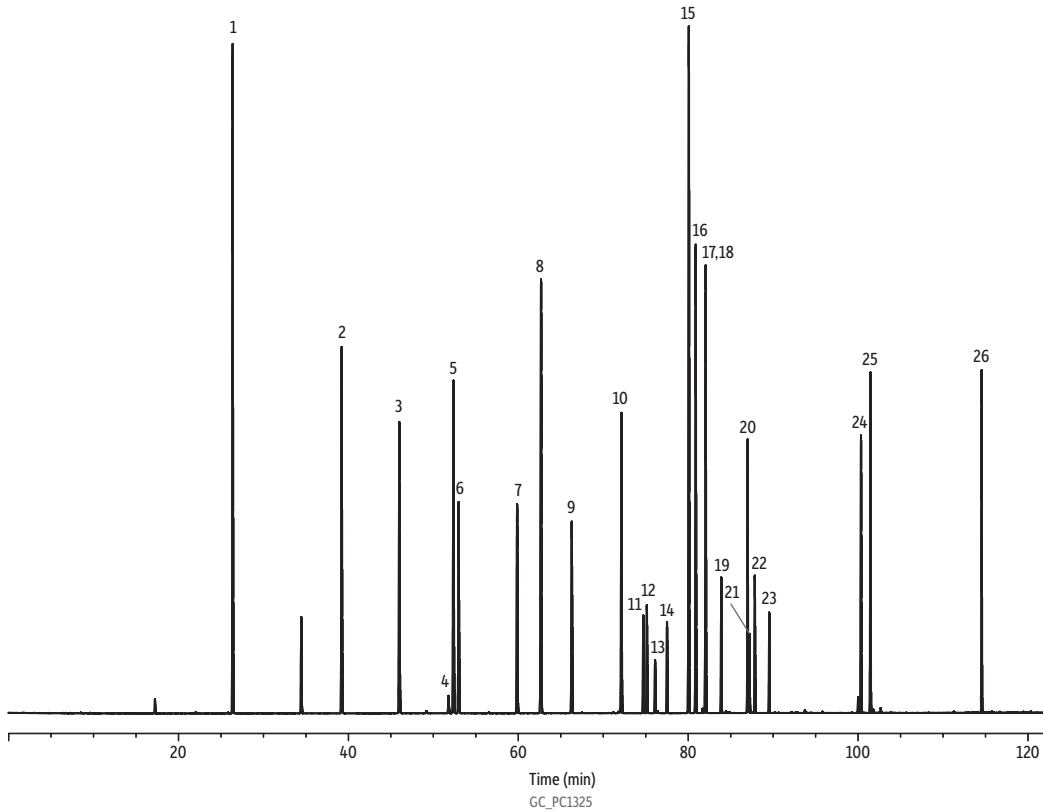


Naphthenes on Rtx-DHA-100 (ASTM D6729-14)



Peaks	tr (min)	Conc. (wt.%)	Peaks	tr (min)	Conc. (wt.%)
1. Cyclopentane	26.369	9.455	14. Isopropylcyclopentane	77.497	1.305
2. Methylcyclopentane	39.197	5.921	15. <i>cis</i> -1,2-Dimethylcyclohexane	80.070	10.276
3. Cyclohexane	45.987	4.773	16. 1,1,4-Trimethylcyclohexane	80.878	6.304
4. <i>cis</i> -1,3-Dimethylcyclopentane	51.776	0.300	17. <i>n</i> -Propylcyclopentane	82.052	4.373
5. <i>trans</i> -1,3-Dimethylcyclopentane	52.360	5.799	18. <i>ctt</i> -1,2,4-Trimethylcyclohexane	82.052	1.839
6. <i>trans</i> -1,2-Dimethylcyclopentane	52.969	3.653	19. <i>ccc</i> -1,3,5-Trimethylcyclohexane	83.885	2.343
7. Methylcyclohexane	59.852	3.677	20. <i>ctc</i> -1,2,3-Trimethylcyclohexane	86.992	3.676
8. Ethylcyclopentane	62.671	7.837	21. <i>ctc</i> -1,2,4-Trimethylcyclohexane	87.211	1.062
9. <i>ctc</i> -1,2,3-Trimethylcyclopentane	66.286	3.738	22. 1,1,2-Trimethylcyclohexane	87.835	1.842
10. <i>trans</i> -1,4-Dimethylcyclohexane	72.135	4.705	23. Isobutylcyclopentane	89.533	1.334
11. 1-Ethyl-1-methylcyclopentane	74.704	1.459	24. Isobutylcyclohexane	100.336	3.666
12. <i>trans</i> -1,2-Dimethylcyclohexane	75.128	1.642	25. <i>tert</i> -1-Methyl-2- <i>N</i> -propylcyclohexane	101.453	4.637
13. <i>ccc</i> -1,2,3-Trimethylcyclopentane	76.092	0.795	26. <i>tert</i> -1-Methyl-2(methylpentyl)cyclopentane	114.543	3.592

Column Rtx-DHA-100, 100 m, 0.25 mm ID, 0.50 μ m (cat.# 10148)
Sample DHA naphthenes standard (cat.# 30728)
Injection
 Inj. Vol.: 0.2 μ L split (split ratio 200:1)
 Liner: Topaz 4.0 mm ID Precision inlet liner w/wool (cat.# 23305)
 Inj. Temp.: 250 °C
Oven
 Oven Temp.: 0 °C (hold 15 min) to 50 °C at 1 °C/min to 130 °C at 2 °C/min to 270 °C at 4 °C/min
Carrier Gas He, constant pressure
 Linear Velocity: 24 cm/sec @ 35 °C
Detector FID @ 300 °C
 Make-up Gas
 Flow Rate: 30 mL/min
 Make-up Gas
 Type: N₂
 Hydrogen flow: 40 mL/min
 Air flow: 370 mL/min
Instrument Agilent 7890A GC