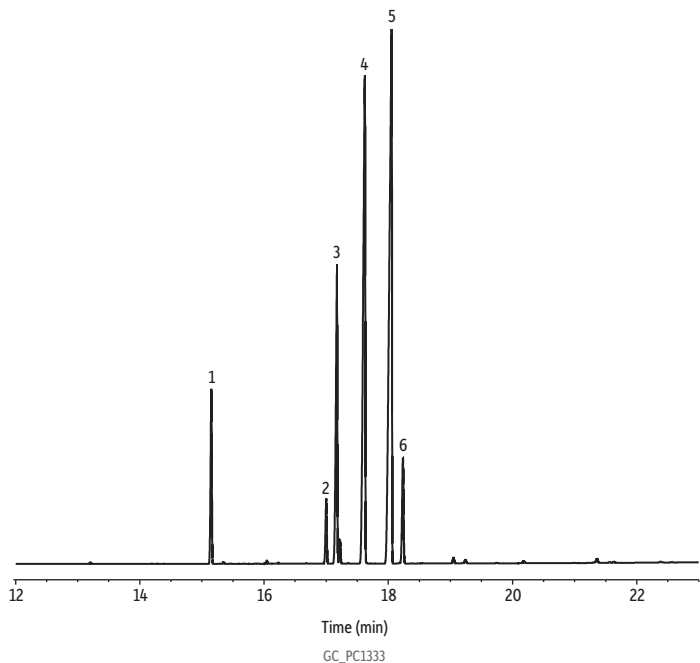


FAME in Soy B100 by EN 14103 (2011)



Peaks	tr (min)	Structural Nomenclature
1. Methyl palmitate	15.149	C16:0
2. Methyl stearate	16.997	C18:0
3. Methyl oleate	17.171	C18:1 (<i>cis</i> -9)
4. Methyl linoleate	17.621	C18:2 (<i>cis</i> -9,12)
5. Methyl nonadecanoate	18.052	C19:0
6. Methyl linolenate	18.235	C18:3 (<i>cis</i> -9,12,15)

Column	FAMEWAX, 30 m, 0.25 mm ID, 0.25 μ m (cat.# 12497)
Sample	Soy B100 biodiesel Methyl nonadecanoate (cat.# 35055)
Diluent:	Toluene
Conc.:	10 mg/mL, EN 14103 (2011) method preparation
Injection	
Inj. Vol.:	1 μ L split (split ratio 100:1)
Liner:	Topaz 4.0 mm ID Precision inlet liner w/ wool (cat.# 23305)
Inj. Temp.:	240 °C
Oven	
Oven Temp.:	60 °C (hold 2 min) to 200 °C at 10 °C/min to 240 °C at 5 °C/min (hold 7 min)
Carrier Gas	H ₂ , constant flow
Flow Rate:	1.7 mL/min
Detector	FID @ 250 °C
Instrument	Agilent 7890B GC