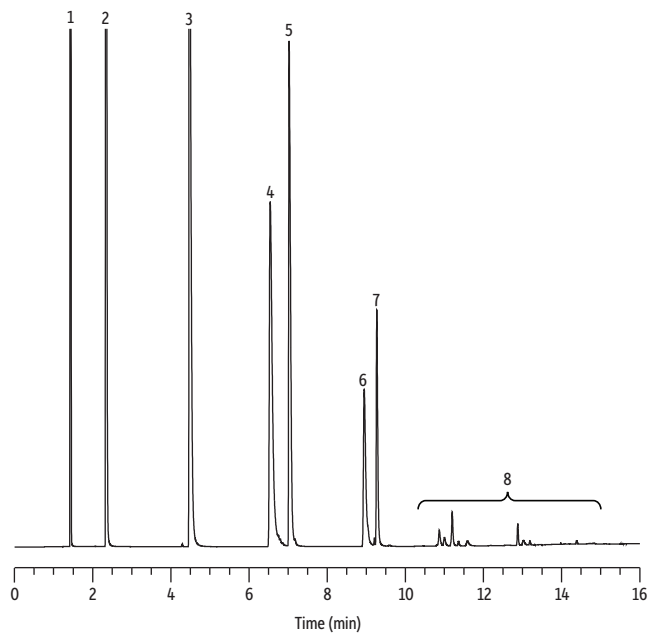


Hydrocarbon Gases on Rt-Q-BOND



Peaks	Mol%
1. Methane	70.00
2. Ethane	8.99
3. Propane	6.00
4. Isobutane	3.01
5. <i>n</i> -Butane	3.00
6. Isopentane	1.00
7. <i>n</i> -Pentane	1.01
8. Hexanes	0.50

Column Rt-Q-BOND, 30 m, 0.32 mm ID, 10 μ m (cat.# 19744)
Sample Hydrocarbon gas mix
Injection
Inj. Vol.: 100 μ L split (split ratio 10:1)
Liner: Topaz 2.0 mm ID straight inlet liner (cat.# 23313)
Inj. Temp.: 250 $^{\circ}$ C
Oven
Oven Temp.: 40 $^{\circ}$ C to 250 $^{\circ}$ C at 15 $^{\circ}$ C/min (hold 5 min)
Carrier Gas He, constant flow
Flow Rate 2.5 mL/min
Detector FID @ 260 $^{\circ}$ C
Instrument Agilent 7890B GC