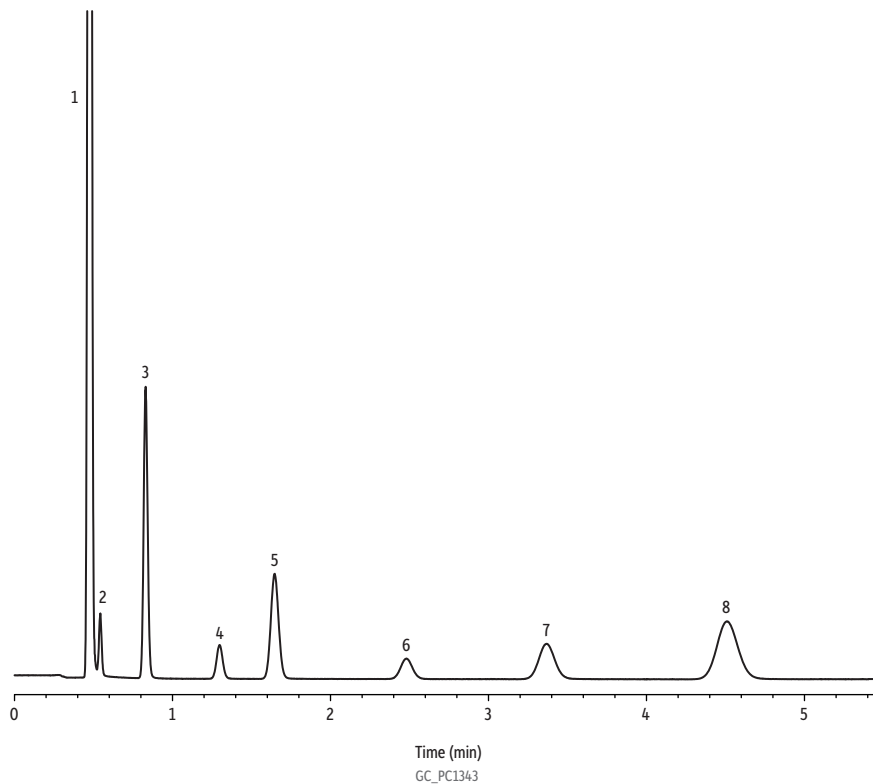


Permanent Gases and Nitrous Oxide on ShinCarbon ST Micropacked Column



Peaks	tr (min)
1. Air (oxygen, nitrogen)	0.48
2. Carbon monoxide	0.54
3. Methane	0.83
4. Carbon dioxide	1.30
5. Nitrous oxide	1.65
6. Ethyne (acetylene)	2.48
7. Ethene (ethylene)	3.37
8. Ethane	4.51

Column ShinCarbon ST micropacked column, 100/120 mesh, 2 m, 1.00 mm ID (cat.# 19808)
Sample
Conc.: Varied (0.1-0.5% by volume)
Injection
Inj. Vol.: 100 µL split (split ratio 5:1)
Liner: Topaz 2.0 mm ID straight inlet liner (cat.# 23313)
Inj. Temp.: 200 °C
Oven
Oven Temp.: 165 °C (hold 6 min)
Carrier Gas He, constant flow
Flow Rate: 15 mL/min
Detector TCD @ 200 °C
Instrument Agilent 7890B GC