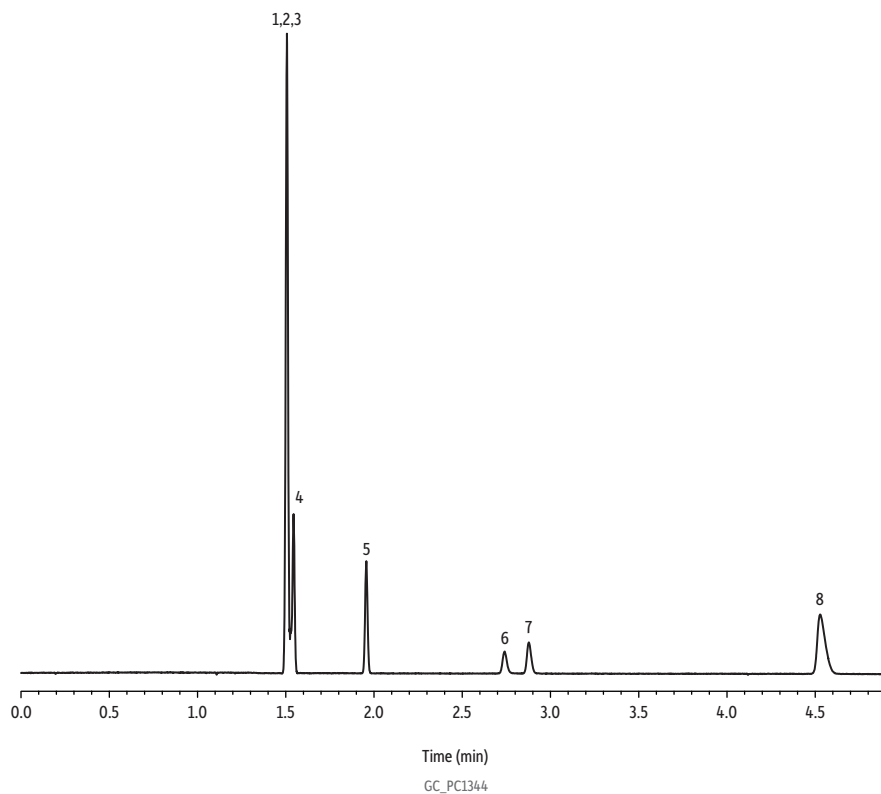


Permanent Gases and Nitrous Oxide on Rt-Alumina BOND/Na₂SO₄



Peaks	tr (min)
1. Nitrogen	1.51
2. Oxygen	1.51
3. Carbon monoxide	1.51
4. Methane	1.54
5. Ethane	1.96
6. Nitrous oxide	2.74
7. Ethene	2.88
8. Propane	4.53

Column Rt-Alumina BOND/Na₂SO₄, 30 m, 0.53 mm ID, 10 μm (cat.# 19755)
Sample
 Conc.: Varied (0.1-0.5% by volume)
Injection
 Inj. Vol.: 150 μL split (split ratio 10:1)
 Liner: Topaz 2.0 mm ID straight inlet liner (cat.# 23313)
 Inj. Temp.: 200 °C
Oven
 Oven Temp.: 40 °C (hold 5 min)
Carrier Gas
 He, constant flow
 Flow Rate: 5.1 mL/min
Detector
 TCD @ 200 °C
Instrument
 Agilent 7890B GC
Notes
 Carbon dioxide does not elute from column.