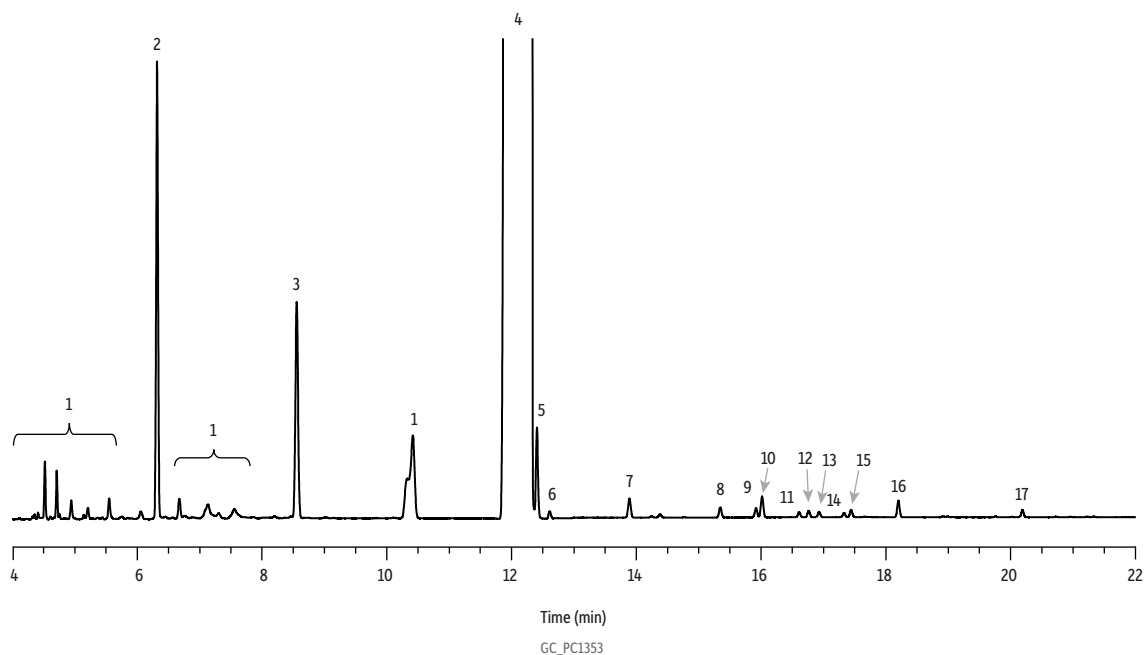


Ethylbenzene on Stabilwax



Peaks

1. Nonaromatic hydrocarbons
2. Benzene
3. Toluene
4. Ethylbenzene
5. *p*-Xylene
6. *m*-Xylene
7. *o*-Xylene
8. Propylbenzene

Peaks

9. *p*-Ethyltoluene
10. *m*-Ethyltoluene
11. Isobutylbenzene
12. Mesitylene
13. *sec*-Butylbenzene
14. Styrene
15. Allylbenzene
16. 1,2,4-Trimethylbenzene
17. α -Methylstyrene

Column	Stabilwax, 60 m, 0.32 mm ID, 0.25 μ m (cat.# 10627)
Sample	Ethylbenzene
Injection	
Inj. Vol.:	0.6 μ L split (split ratio 100:1)
Liner:	Topaz 4.0 mm ID Precision inlet liner w/wool (cat.# 23305)
Inj. Temp.:	250 $^{\circ}$ C
Oven	
Oven Temp.:	60 $^{\circ}$ C (hold 10 min) to 150 $^{\circ}$ C at 5 $^{\circ}$ C/min (hold 4 min)
Carrier Gas	He, constant flow
Flow Rate:	1.7 mL/min
Detector	FID @ 265 $^{\circ}$ C
Instrument	Agilent 7890B GC
Notes	Purity analysis of ethylbenzene.