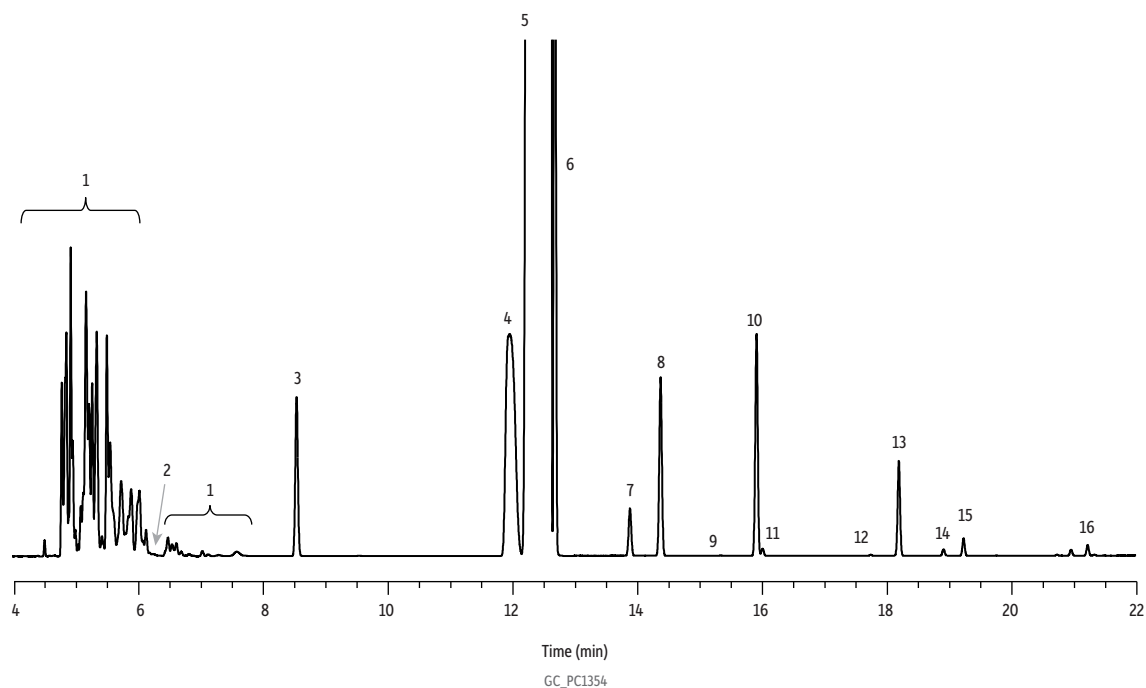


Impurities in *p*-Xylene on Stabilwax



Peaks

1. Nonaromatic hydrocarbons
2. Benzene
3. Toluene
4. Ethylbenzene
5. *p*-Xylene
6. *m*-Xylene
7. Cumene
8. *o*-Xylene

Peaks

9. Propylbenzene
10. *p*-Ethyltoluene
11. *m*-Ethyltoluene
12. Allylbenzene
13. 1,2,4-Trimethylbenzene
14. 1,3-Diethylbenzene
15. 1,4-Diethylbenzene
16. Phenylacetylene

Column Stabilwax, 60 m, 0.32 mm ID, 0.25 μ m (cat.# 10627)
Sample *p*-Xylene
Injection
 Inj. Vol.: 0.6 μ L split (split ratio 100:1)
 Liner: Topaz 4.0 mm ID Precision inlet liner w/wool (cat.# 23305)
 Inj. Temp.: 250 $^{\circ}$ C
Oven
 Oven Temp.: 60 $^{\circ}$ C (hold 10 min) to 150 $^{\circ}$ C at 5 $^{\circ}$ C/min (hold 4 min)
Carrier Gas He, constant flow
Flow Rate: 1.7 mL/min
Detector FID @ 265 $^{\circ}$ C
Instrument Agilent 7890B GC