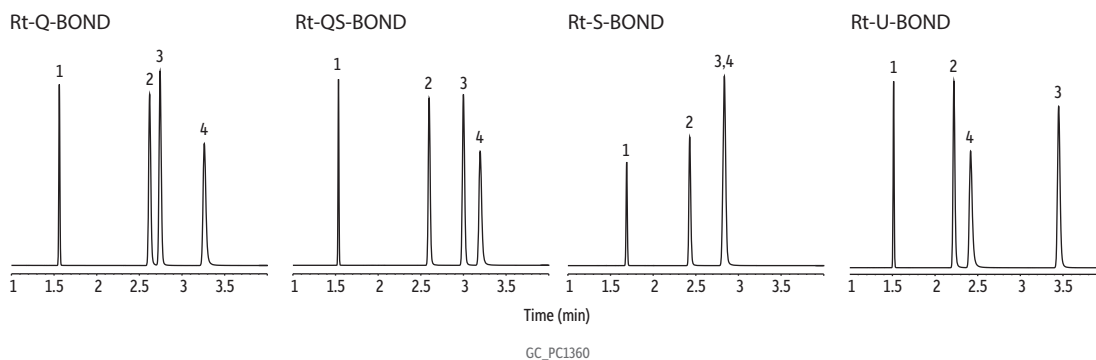


Selectivity of Rt-BOND Porous Polymer PLOT Columns (C1-C2 Hydrocarbons)



Peaks	Conc. Mol%
1. Methane	1.0
2. Ethylene	1.0
3. Acetylene	1.0
4. Ethane	1.0

Column	See notes
Sample	C1-C2 Hydrocarbons
Diluent:	Helium (balance gas)
Injection	
Inj. Vol.:	50 µL split (split ratio 10:1)
Liner:	Topaz 2.0 mm ID straight inlet liner (cat.# 23313)
Inj. Temp.:	200 °C
Oven	
Oven Temp.:	40 °C (hold 3 min) to 100 °C at 20 °C/min
Carrier Gas	He, constant flow
Flow Rate:	4.5 mL/min
Detector	FID @ 200 °C
Instrument	Agilent 7890B GC
Notes	Columns used: Rt-Q-BOND, 30 m, 0.53 mm ID, 20 µm (cat.# 19742) Rt-QS-BOND, 30 m, 0.53 mm ID, 20 µm (cat.# 19738) Rt-S-BOND, 30 m, 0.53 mm ID, 20 µm (cat.# 19746) Rt-U-BOND, 30 m, 0.53 mm ID, 20 µm (cat.# 19750)