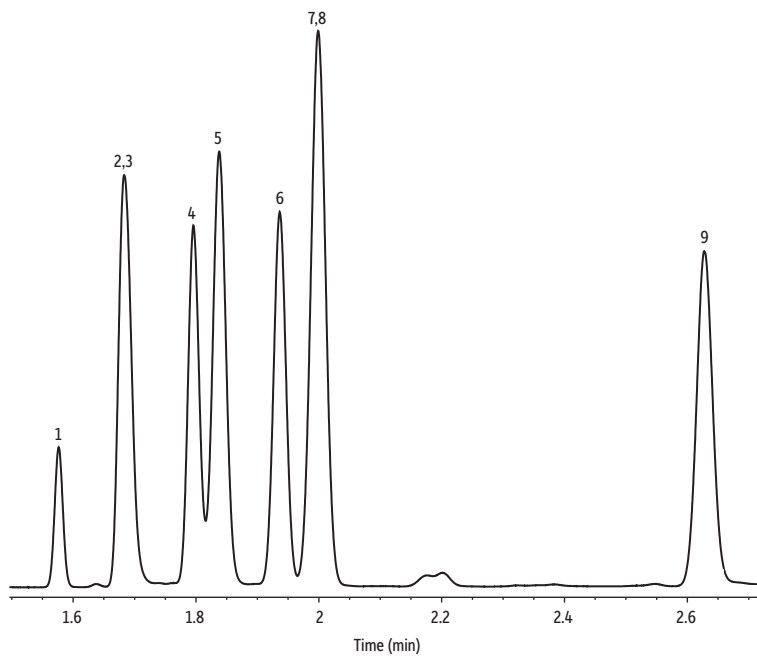


# Aliphatic Amines on Stabilwax-DB



GC\_PC1361

Peaks	tr (min)
1. Trimethylamine	1.576
2. Dimethylamine	1.683
3. Methylamine	1.684
4. Ethylamine	1.796
5. Isopropylamine	1.838
6. Diethylamine	1.936
7. Triethylamine	1.999
8. Diisopropylamine	2.000
9. <i>n</i> -Butylamine	2.628

**Column** Stabilwax-DB, 30 m, 0.53 mm ID, 1.00  $\mu$ m (cat.# 10855)  
**Sample** Custom aliphatic amines  
**Diluent:** Methanol  
**Conc.:** 1000  $\mu$ g/mL  
**Injection**  
**Inj. Vol.:** 1  $\mu$ L split (split ratio 50:1)  
**Liner:** Topaz 4.0 mm ID single taper inlet liner w/wool (cat.# 23303)  
**Inj. Temp.:** 220 °C  
**Oven**  
**Oven Temp.:** 45 °C (hold 1 min) to 220 °C at 35 °C/min (hold 5 min)  
**Carrier Gas** Hz, constant flow  
**Linear Velocity:** 40 cm/sec @ 45 °C  
**Detector** FID @ 220 °C  
**Make-up Gas**  
**Flow Rate:** 45 mL/min  
**Make-up**  
**Gas Type:** N<sub>2</sub>  
**Hydrogen flow:** 40 mL/min  
**Air flow:** 450 mL/min  
**Data Rate:** 50 Hz  
**Instrument** Agilent/HP6890 GC