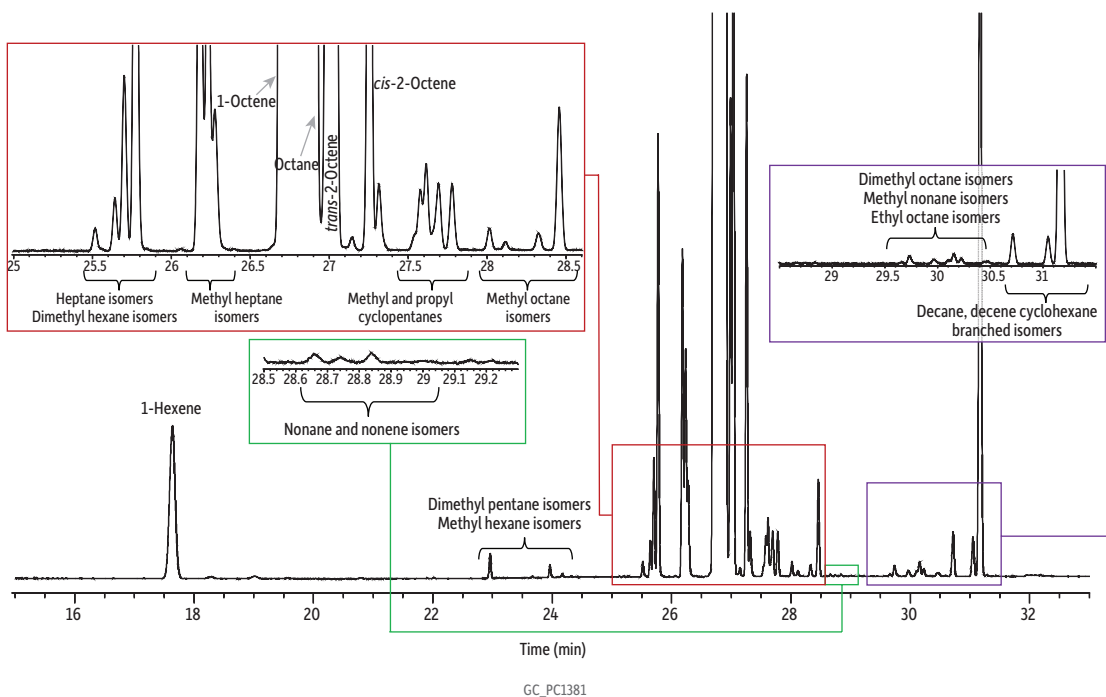


1-Octene on Rxi-LAO (60 m x 0.25 mm x 1.4 μm)



Column Rxi-LAO, 60 m, 0.25 mm ID, 1.4 μm (cat.# 13876)
Standard/Sample 1-Octene
Conc.: Neat solvent
Injection
 Inj. Vol.: 1 μL split (split ratio 100:1)
 Liner: Topaz 4.0 mm ID low pressure drop Precision liner w/wool (cat.# 23309)
 Inj. Temp.: 250 °C
 Split Vent Flow Rate: 125 mL/min
Oven
 Oven Temp.: 35 °C (hold 20 min) to 160 °C at 30 °C/min (hold 20 min)
Carrier Gas He, constant flow
 Linear Velocity: 23 cm/sec @ 35 °C
Detector FID @ 300 °C
 Make-up Gas Flow Rate: 45 mL/min
 Make-up Gas Type: N₂
 Hydrogen flow: 40 mL/min
 Air flow: 450 mL/min
 Data Rate: 20 Hz
Instrument Agilent 7890B GC
Sample Preparation The sample was pipetted into a 2 mL vial (cat.# 21142) and capped with a short screw cap (cat.# 24498).
Notes Peaks are tentatively identified.