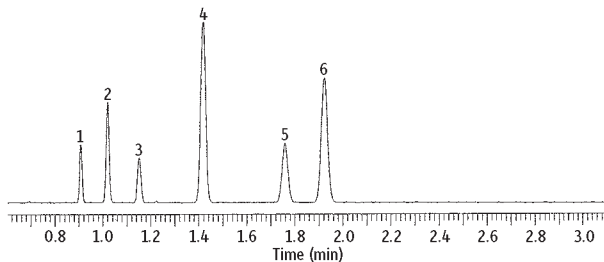
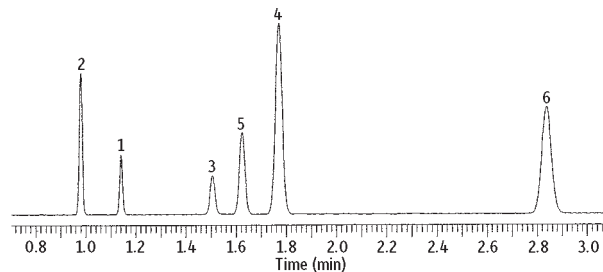


Blood Alcohol on Rtx-BAC1 & Rtx-BAC2 (0.32mm ID Columns)

Rtx-BAC1



Rtx-BAC2



GC_PH00241

Peaks	Conc. (wt.%)	Column	Notes
1. Methanol	0.1	Rtx-BAC1 30 m, 0.32 mm ID, 1.80 μ m (cat.# 18003)	Oven Oven Temp.: 40 °C Carrier Gas He Detector FID Instrument Perkin Elmer HS 40 headspace autosampler Vial pressure: 30 psi Vial pressurization time: 0.15 min. Vial sampling time: 0.01 min. Transfer line: 0.32 mm ID Hydroguard fused silica tubing Transfer line temp.: 200°C
2. Acetaldehyde	0.2	and Rtx-BAC2 30 m, 0.32 mm ID, 1.20 μ m (cat.# 18002)	
3. Ethanol	0.2	using two hole ferrule	
4. Isopropanol	0.1	1.0 mL headspace sample of a blood alcohol mix	
5. Acetone	0.01	Inj. Vol.: 1,000 μ L headspace-syringe split	
6. <i>n</i> -Propanol	0.1	Liner: 2mm ID	
		Inj. Temp.: 200 °C	
		Headspace-Syringe	
		Split Vent Flow Rate: 20 mL/min	
		Sample Temp.: 70 °C	
		Sample Equil. Time: 15 min	