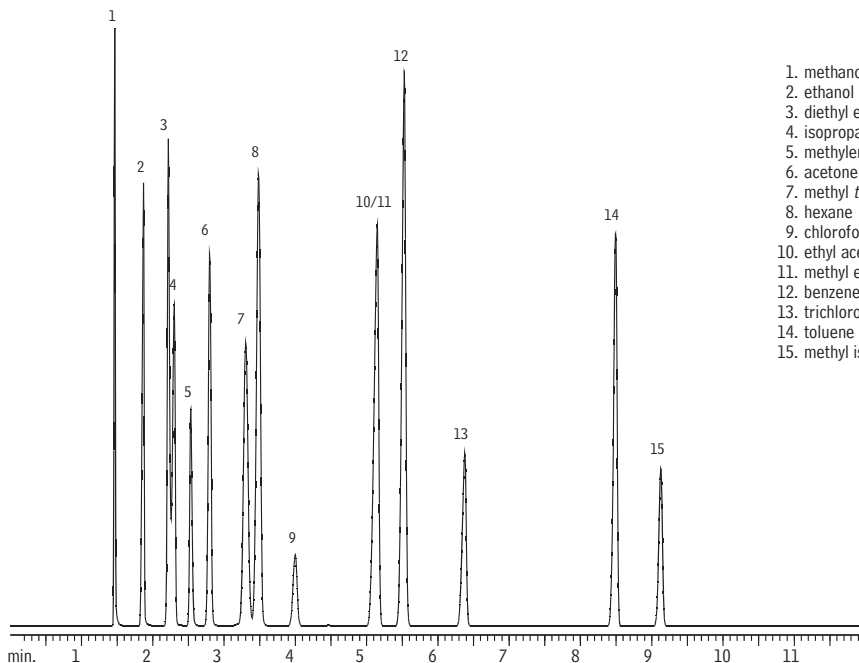


# Abused Inhalants

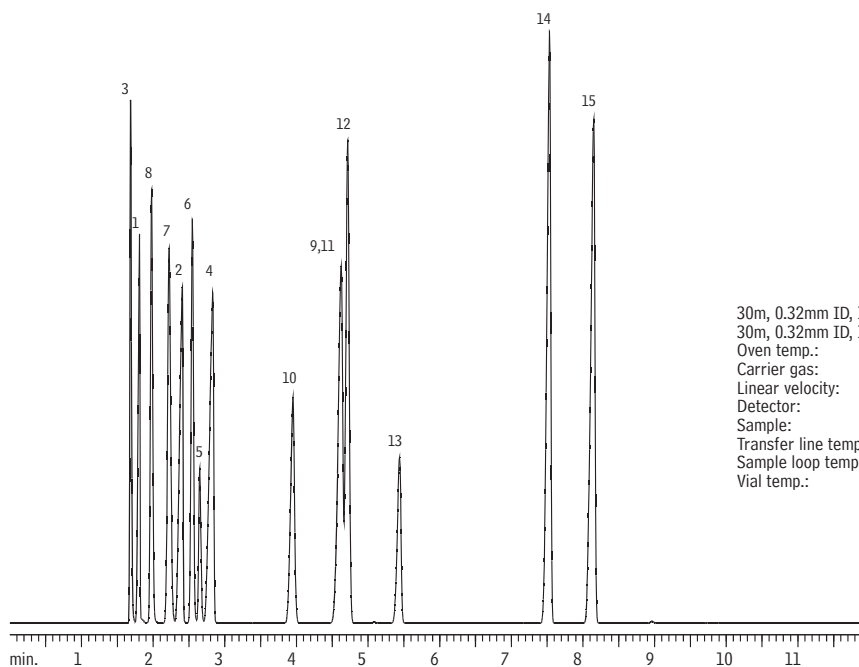
## Rtx<sup>®</sup>-BAC1 & Rtx<sup>®</sup>-BAC2

Rtx<sup>®</sup>-BAC1



1. methanol
2. ethanol
3. diethyl ether
4. isopropanol
5. methylene chloride
6. acetone
7. methyl *tert*-butyl ether
8. hexane
9. chloroform
10. ethyl acetate
11. methyl ethyl ketone
12. benzene
13. trichloroethylene
14. toluene
15. methyl isobutyl ketone

Rtx<sup>®</sup>-BAC2



30m, 0.32mm ID, 1.80 $\mu$ m Rtx<sup>®</sup>-BAC1 (cat.# 18003)  
 30m, 0.32mm ID, 1.20 $\mu$ m Rtx<sup>®</sup>-BAC2 (cat.# 18002)  
 Oven temp.: 40°C (hold 4 min.) to 120°C @ 10°C/min.  
 Carrier gas: helium  
 Linear velocity: 50cm/sec.  
 Detector: FID  
 Sample: 250 $\mu$ L headspace  
 Transfer line temp.: 125°C  
 Sample loop temp.: 125°C  
 Vial temp.: 70°C

GC\_PH00446

Acknowledgement: Analyses performed using a Tekmar 7000 Headspace Autosampler on loan courtesy of Tekmar-Dohrmann.