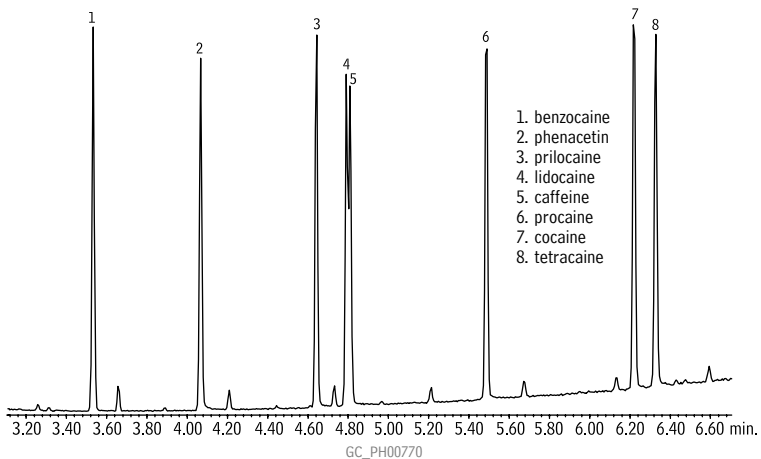


Cocaine & Cocaine Adulterants Rtx[®]-440



Column: Rtx[®]-440 30m, 0.25mm ID, 0.50 μ m (cat.# 12938)
Sample: 100 μ g/mL each compound in methanol
Inj.: 1.0 μ L split (split ratio 1:10), laminar cup splitter inlet liner (cat.# 20801)
Inj. temp.: 250°C
Carrier gas: helium, constant flow
Flow rate: 1mL/min.
Oven temp.: 150°C to 275°C @ 25°C/min., to 300°C @ 15°C/min. (hold 5.0 min.)
Det.: MS
Transfer line temp.: 180°C
Scan range: 35-550amu
Ionization: EI
Mode: scan