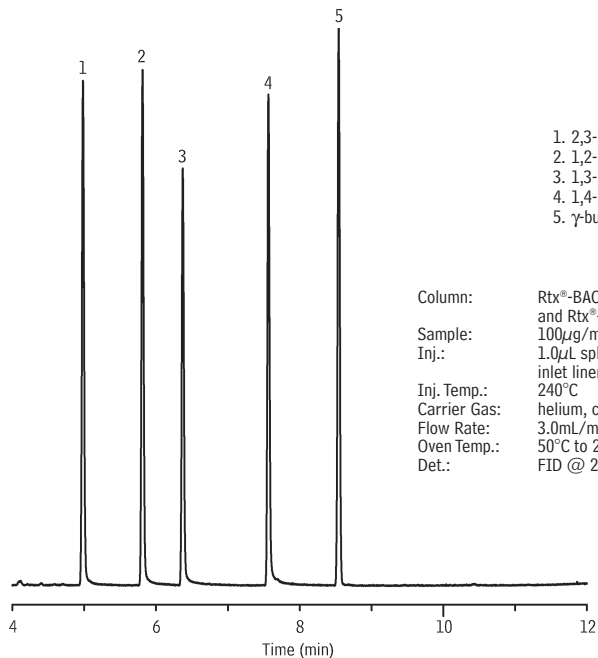


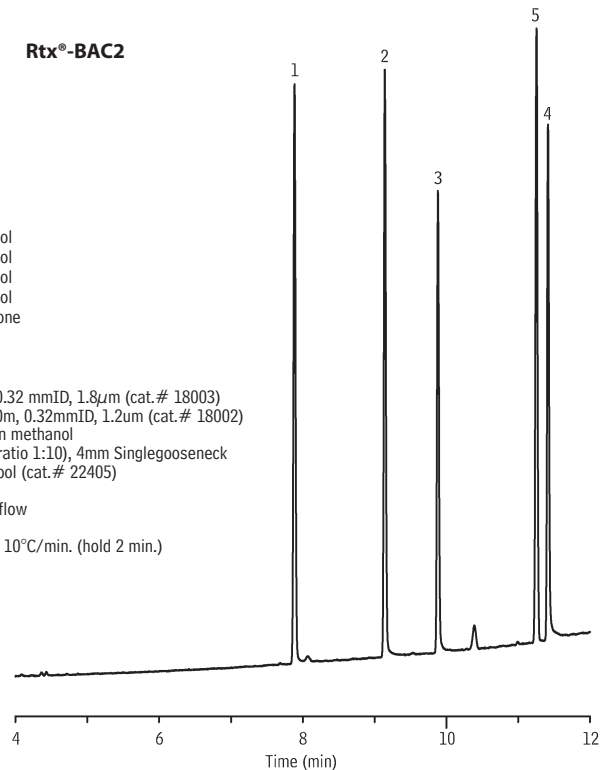
γ -butyrolactone & 1,4-butanediol

Rtx®-BAC1



GC_PH00808

Rtx®-BAC2



GC_PH00809

1. 2,3-butanediol
2. 1,2-butanediol
3. 1,3-butanediol
4. 1,4-butanediol
5. γ -butyrolactone

Column: Rtx®-BAC1 30m, 0.32 mmID, 1.8 μ m (cat.# 18003)
and Rtx®-BAC2 30m, 0.32mmID, 1.2 μ m (cat.# 18002)
Sample: 100 μ g/mL each in methanol
Inj.: 1.0 μ L split (split ratio 1:10), 4mm Singlegooseneck
inlet liner with wool (cat.# 22405)
Inj. Temp.: 240°C
Carrier Gas: helium, constant flow
Flow Rate: 3.0mL/min.
Oven Temp.: 50°C to 240°C @ 10°C/min. (hold 2 min.)
Det.: FID @ 240°C