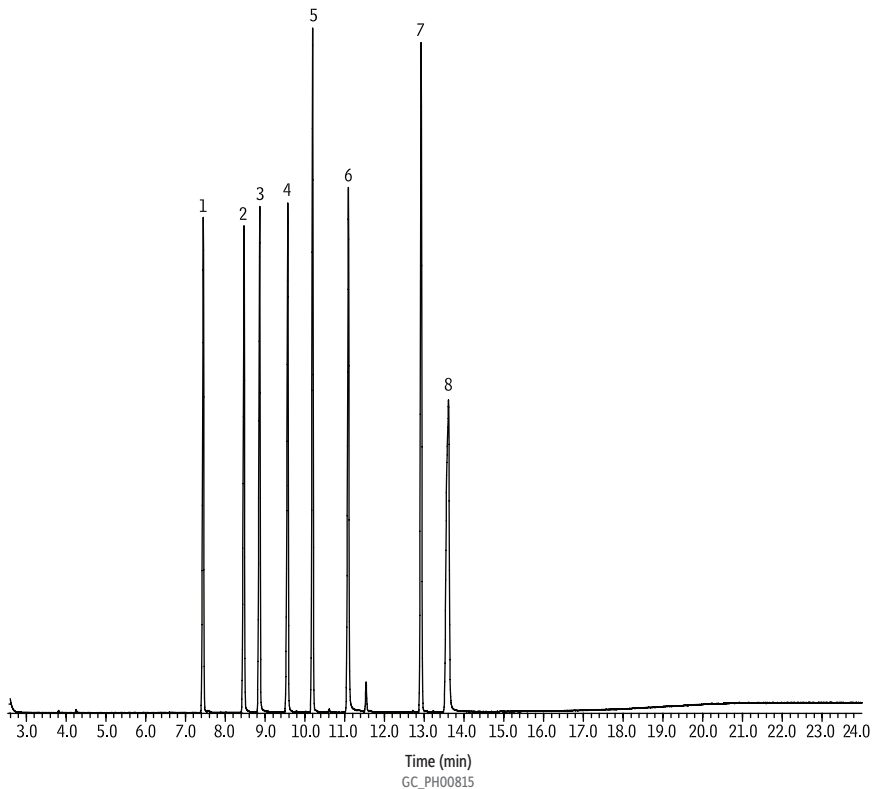


## Acidic/Neutral Drugs on Rxi-5ms



### Peaks

1. Methprylon
2. Butalbital
3. Amobarbital
4. Meprobamate
5. Glutethimide
6. Phenobarbital
7. Methaqualone
8. Primidone

### Column

Rxi-5ms, 30 m, 0.25 mm ID, 0.25  $\mu$ m (cat.# 13423)

### Standard/Sample

1000  $\mu$ g/mL each

### Diluent:

Methanol

### Conc.:

20 ng each compound on column

### Injection

#### Inj. Vol.:

1.0  $\mu$ L split (split ratio 50:1)

#### Liner:

4 mm ID single taper inlet liner, Siltek deactivation (cat.# 20799-214)

#### Inj. Temp.:

250 °C

### Oven

#### Oven Temp.:

100 °C to 220 °C at 15 °C/min to 330 °C at 10 °C/min (hold 5 min)

### Carrier Gas

He, constant pressure

#### Linear Velocity:

30 cm/sec

### Detector

MS

#### Mode:

Scan

#### Transfer Line Temp.:

300 °C

#### Analyzer Type:

Quadrupole

#### Tune Type:

PFTBA

#### Ionization Mode:

EI

#### Scan Range:

35-550 amu

### Instrument

HP6890 GC & 5973 MSD

