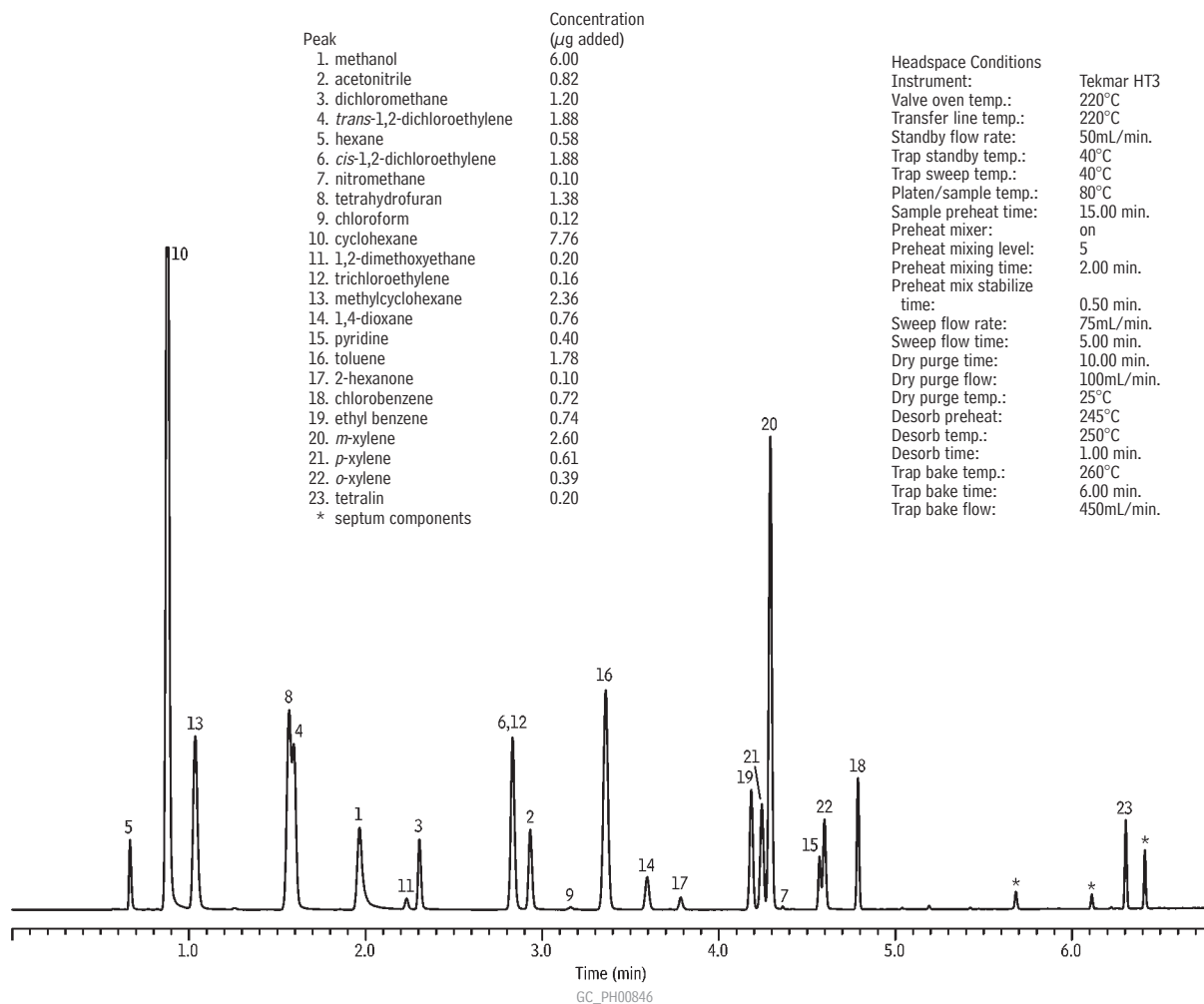


# OVI<sub>s</sub> by Dynamic Headspace and Gerstel MACH Rtx®-WAX (G16)



## Instrument Conditions

Instrument: Agilent 6890 with Gerstel Modular Accelerated Column Heater (MACH)  
 Column: Rtx®-WAX (G16) 20m, 0.18mm ID, 0.4µm (custom) (shown)  
 Sample: Residual Solvents Class 2 - Mix A (cat.# 36271) and Residual Solvents Class 2 - Mix B (cat.# 36272) diluted in 0.5mL DI water/~0.2g sodium sulfate in 20mL headspace vial; components at varying concentrations  
 Inj.: headspace trap injection, split ratio 20:1, flow split after injector to two columns, using a 0.32mm ID intermediate polarity deactivated guard column (cat.# 10044) and a "Y" Press-Tight® splitter (cat.# 20405)  
 Inj. temp.: 220°C  
 Carrier: helium, constant flow  
 Flow rate: 0.99mL/min.  
 Oven temp.: 250°C  
 Column heater: Gerstel Modular Accelerated Column Heater  
 Gerstel module temp.: 35°C (2 min.) to 60°C at 100°C/min. (hold 1 min.), to 200°C at 40°C/min. (hold 2 min.)  
 Det.: FID at 250°C, hydrogen: 40mL/min., air: 450mL/min., makeup gas: 45mL/min.