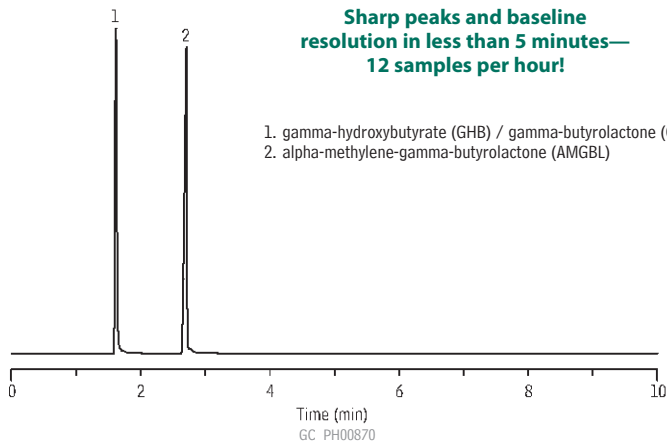
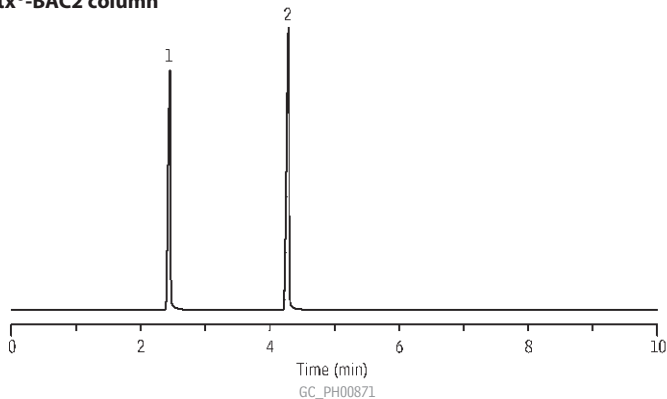


gamma-Hydroxybutyrate (GHB) and gamma-Butyrolactone (GBL) Rtx[®]-BAC1 and Rtx[®]-BAC2

Rtx[®]-BAC1 column



Rtx[®]-BAC2 column



Column: Rtx[®]-BAC1 30m, 0.32mm ID, 1.8 μ m (cat.# 18003) and Rtx[®]-BAC2 30m, 0.32mm ID, 1.2 μ m (cat.# 18002), connected via universal "Y" Press-Tight[®] connector (cat.# 20405)

Sample: GHB, GBL, α -methylene- γ -butyrolactone (AMGBL), 10 μ g/mL each in water

Inj.: 1.0mL headspace, split (split ratio 1:10), 1mm split inlet liner (cat.# 20972)

Inj. temp.: 200 $^{\circ}$ C

Carrier gas: helium, constant pressure

Linear velocity: 44cm/sec. @ 50 $^{\circ}$ C

Oven temp.: 50 $^{\circ}$ C (3 min.) to 150 $^{\circ}$ C @ 20 $^{\circ}$ C/min. (hold 7 min.)

Det: FID @ 240 $^{\circ}$ C

Headspace autosampler: Teledyne/Tekmar HT3

Sample/platen temp.: 100 $^{\circ}$ C

Sample equilibration: 15 min.

Mixing time: 5 min.

Vial pressure: 10psig

Vial pressurization time: 2 min.

Loop fill time: 2 min.

Transfer line temp.: 120 $^{\circ}$ C