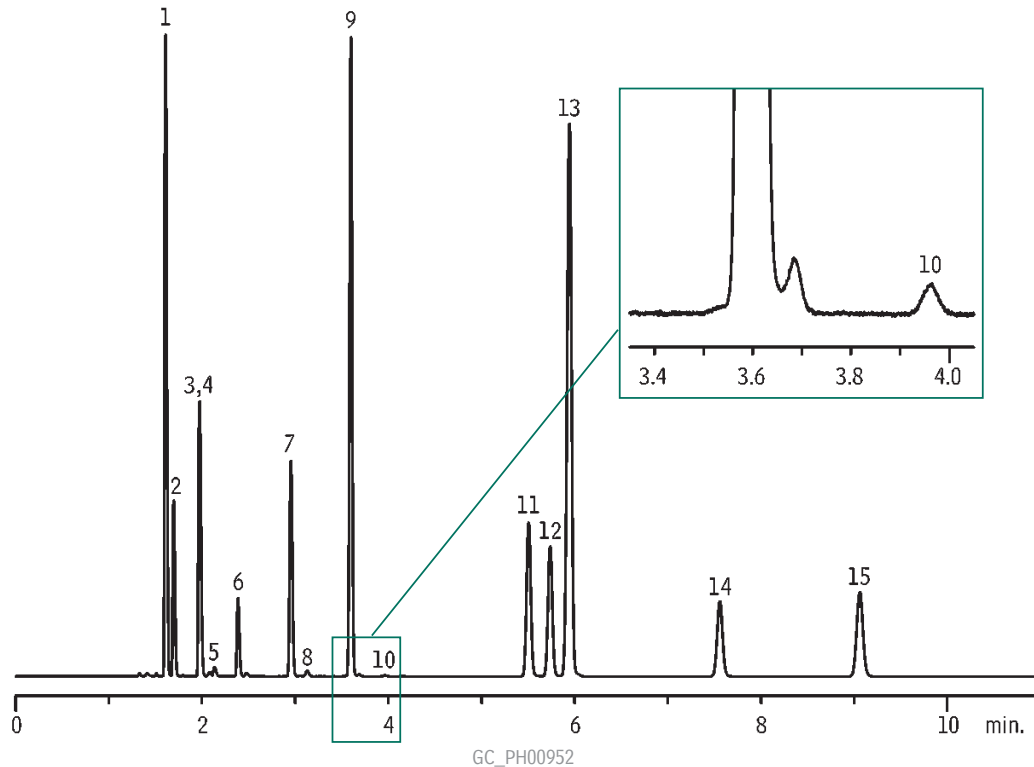


Residual Solvents Class 2 Stabilwax® (G16)



1. cyclohexane
2. methylcyclohexane
3. *trans*-1,2-dichloroethene
4. tetrahydrofuran
5. methanol
6. dichloromethane
7. *cis*-1,2-dichloroethene
8. acetonitrile
9. toluene
10. 1,4-dioxane
11. ethyl benzene
12. *p*-xylene
13. *m*-xylene
14. *o*-xylene
15. chlorobenzene

Column: Stabilwax®, 30m, 0.32mm ID, 0.25µm (cat.# 10624)

Sample: USP Stock Standard Residual Solvents Class 2 Mix A (cat.# 36271) in 20mL headspace vial (cat.# 24685), water diluent

Inj.: headspace injection (split ratio 1:5), 2mm splitless liner IP deactivated (cat.# 20712)

Inj. temp.: 140°C

Carrier gas: helium, constant flow

Flow rate: 2.15mL/min., 35.2cm/sec.

Oven temp.: 50°C for 20 min. to 165°C @ 6°C/min. (hold for 20 min.)

Det.: FID @ 250°C

Headspace Conditions

Instrument: Overbrook Scientific HT200H

Syringe temp.: 100°C

Sample temp.: 80°C

Sample equil. time.: 45 min.

Injection vol.: 1.0mL

Injection speed: setting 8

Injection dwell: 5 sec.