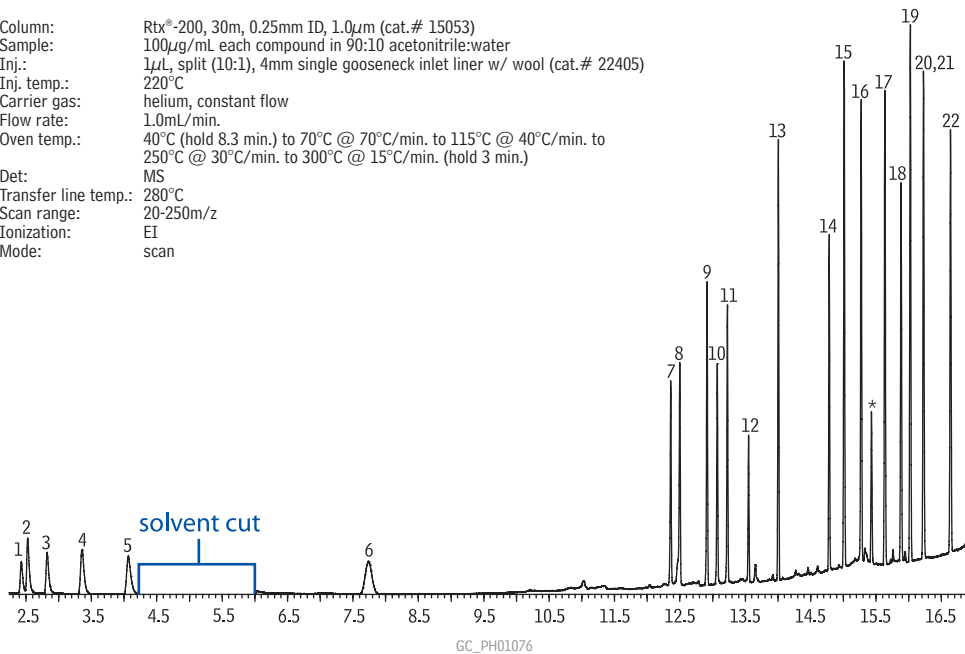


Potential Genotoxic Impurities (PGIs) Rtx®-200

Column: Rtx®-200, 30m, 0.25mm ID, 1.0µm (cat.# 15053)
 Sample: 100µg/mL each compound in 90:10 acetonitrile:water
 Inj.: 1µL, split (10:1), 4mm single gooseneck inlet liner w/ wool (cat.# 22405)
 Inj. temp.: 220°C
 Carrier gas: helium, constant flow
 Flow rate: 1.0mL/min.
 Oven temp.: 40°C (hold 8.3 min.) to 70°C @ 70°C/min. to 115°C @ 40°C/min. to 250°C @ 30°C/min. to 300°C @ 15°C/min. (hold 3 min.)
 Det: MS
 Transfer line temp.: 280°C
 Scan range: 20-250m/z
 Ionization: EI
 Mode: scan



1. 1-chloropropane
2. bromoethane
3. 2-chloropropane
4. 1-bromopropane
5. 2-bromopropane
6. 1-bromobutane
7. dimethyl sulfate
8. methyl methanesulfonate
9. ethyl methanesulfonate
10. isopropyl methanesulfonate
11. diethyl sulfate
12. di-isopropyl sulfate
13. di-*n*-propyl sulfate
14. dibutyl sulfate
15. methylbenzene sulfonate
16. ethylbenzene sulfonate
17. methyl toluenesulfonate
18. ethyl toluenesulfonate
19. *n*-butyl benzenesulfonate
20. *n*-propyl toluenesulfonate
21. isopropyl toluenesulfonate
22. *n*-butyl toluenesulfonate

*ortho isomer of ethyl toluenesulfonate