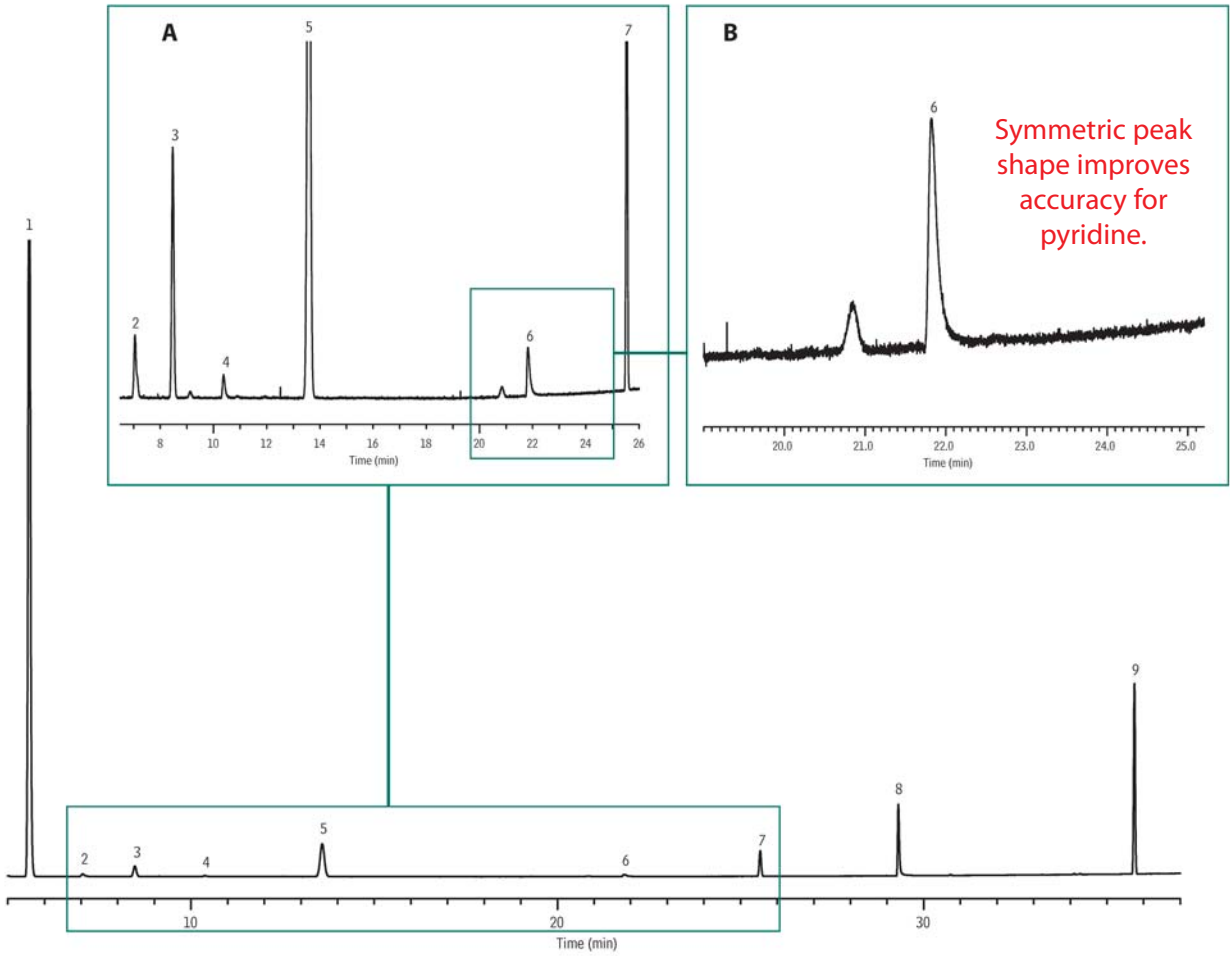


Residual Solvents Rxi®-624Sil MS

1. hexane
2. nitromethane
3. chloroform
4. 1,2-dimethoxyethane
5. trichloroethylene
6. pyridine
7. 2-hexanone
8. DMSO
9. tetralin



GC_PH01117

Column: Rxi®-624Sil MS, 30m, 0.32mm ID, 1.8 μ m (cat.# 13870)
Sample: 83 μ L Residual Solvents Class 2 Mix B Stock Solution (cat.# 36280) in 6mL water in a 20mL headspace vial.
(Concentration not consistent with USP <467> methodology)
Inj.: 1.0mL manual headspace injection, split (3:1), 1mm split liner (cat.# 20972)
Inj. temp.: 140°C
Carrier gas: helium, constant flow
Flow rate: 2.2mL/min.
Oven temp.: 40°C (hold 20 min.) to 240°C @ 10°C/min. (hold 20 min.)
Det: FID @ 250°C
Hydrogen: 40mL/min.
Air: 450mL/min.
Makeup: 45mL/min.
Instrument: Agilent 6890