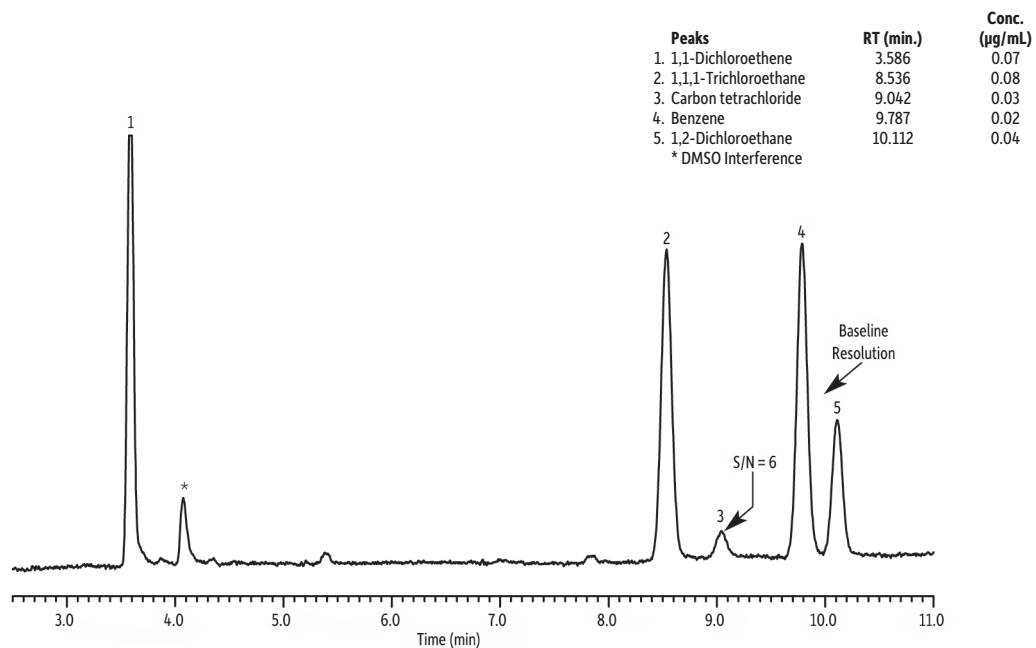


Class 1 Residual Solvents for Water-Soluble Articles on Rxi®-624Sil MS



GC_PH1144

Column Rxi®-624Sil MS, 30 m, 0.32 mm ID, 1.80 µm (cat.# 13870)
Sample Residual Solvents - Class 1 (cat.# 36279)
Diluent: water
Injection headspace-loop split (split ratio 5:1)
Liner: 1mm Split (cat.# 20972)
Headspace-Loop
Inj. Port Temp.: 140 °C
Instrument: Tekmar HT3
Inj. Time: 1 min.
Transfer Line Temp.: 110 °C
Valve Oven Temp.: 110 °C
Sample Temp.: 80 °C
Sample Equil. Time: 60 min.
Vial Pressure: 10 psi
Pressurize Time: 0.5 min.
Pressure
Equilibration Time: 0.05 min.
Loop Pressure: 5 psi
Loop Fill Time: 0.1 min.
Oven
Oven Temp: 40 °C (hold 20 min.) to 240 °C at 10 °C/min. (hold 20 min.)
Carrier Gas He, constant flow
Linear Velocity: 35 cm/sec.
Dead Time: 1.45 min. @ 40 °C
Detector FID @ 250 °C
Data Rate: 5 Hz
Instrument Agilent/HP6890 GC
Acknowledgement Teledyne Tekmar