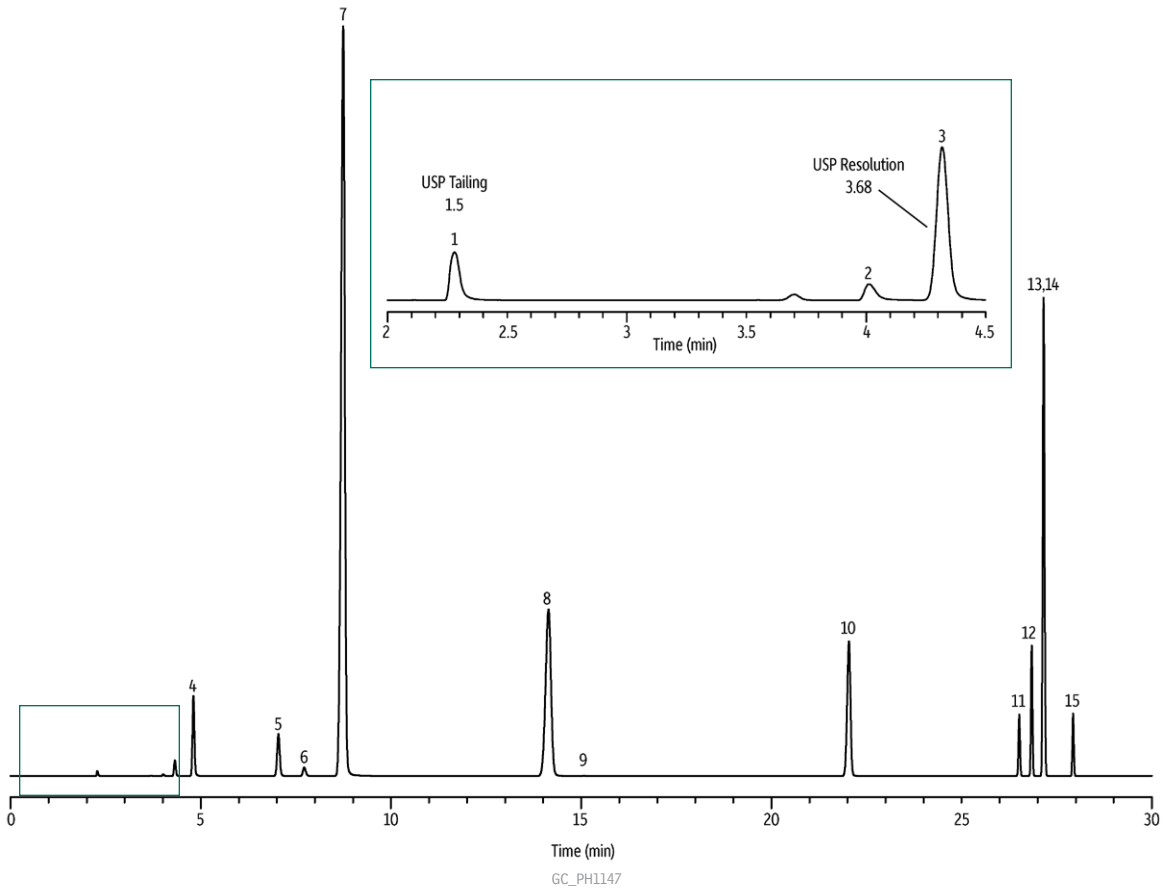


Class 2 - Mix A Residual Solvents for Water-Insoluble Articles on Rxi®-624Sil MS



Peaks	RT (min.)	Conc. (µg/mL)
1. Methanol	2.279	25.00
2. Acetonitrile	3.699	3.42
3. Dichloromethane	4.012	5.00
4. <i>trans</i> -1,2-Dichloroethene	4.804	7.83
5. <i>cis</i> -1,2-Dichloroethene	7.038	7.83
6. Tetrahydrofuran	7.717	5.75
7. Cyclohexane	8.742	32.33
8. Methylcyclohexane	14.138	9.83
9. 1,4-Dioxane	15.068	3.17
10. Toluene	22.035	7.42
11. Chlorobenzene	26.513	3.00
12. Ethylbenzene	26.841	3.07
13. <i>m</i> -Xylene	27.153	10.85
14. <i>p</i> -Xylene	27.153	2.53
15. <i>o</i> -Xylene	27.929	1.63

Column	Rxi®-624Sil MS, 30 m, 0.32 mm ID, 1.80 µm (cat.# 13870)
Sample	Residual Solvents Class 2 - Mix A (cat.# 36271)
Diluent:	DMSO
Injection	headspace-loop split (split ratio 10:1)
Liner:	1mm Split (cat.# 20972)
Headspace-Loop	
Inj. Port Temp.:	140 °C
Instrument:	Tekmar HT3
Inj. Time:	1 min.
Transfer Line Temp.:	110 °C
Valve Oven Temp.:	110 °C
Sample Temp.:	80 °C
Sample Equil. Time:	60 min.
Vial Pressure:	10 psi
Pressurize Time:	0.5 min.
Pressure	
Equilibration Time:	0.05 min.
Loop Pressure:	5 psi
Loop Fill Time:	0.1 min.
Oven	
Oven Temp:	40 °C (hold 20 min.) to 240 °C at 10 °C/min. (hold 20 min.)
Carrier Gas	He, constant flow
Linear Velocity:	35 cm/sec.
Dead Time:	1.45 min. @ 40 °C
Detector	FID @ 250 °C
Data Rate:	5 Hz
Instrument	Agilent/HP6890 GC
Acknowledgement	Teledyne Tekmar