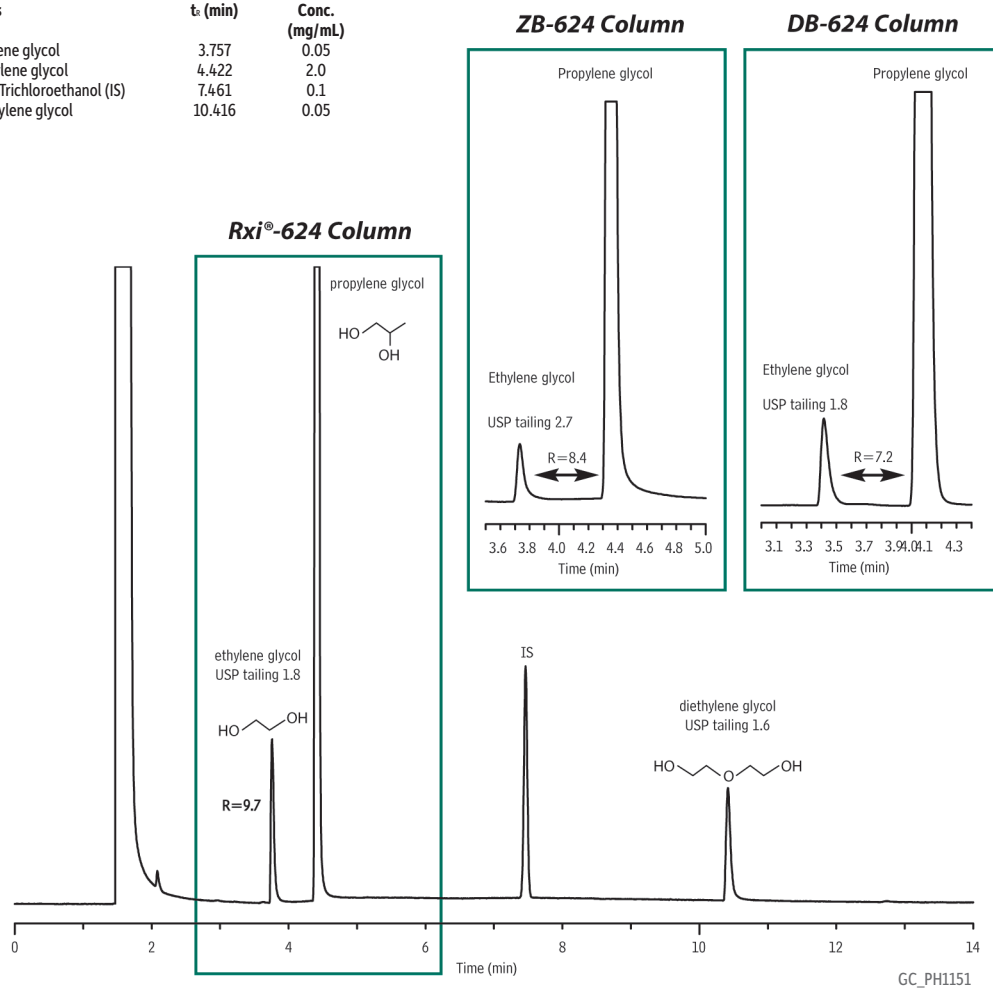


Column Comparison: Limit of Ethylene Glycol and Diethylene Glycol in Propylene Glycol

Peaks	t _r (min)	Conc. (mg/mL)
1. Ethylene glycol	3.757	0.05
2. Propylene glycol	4.422	2.0
3. 2,2,2-Trichloroethanol (IS)	7.461	0.1
4. Diethylene glycol	10.416	0.05



Column Rxi-624Sil MS (see notes), 30 m, 0.32 mm ID, 1.80 µm (cat.# 13870)

Sample methanol

Diluent: methanol

Injection 1 µL split (split ratio 10:1)

Inj. Vol.: 5mm Single Gooseneck with Wool (cat.# 22974-207)

Liner: 220 °C

Inj. Temp.: 220 °C

Oven 100 °C (hold 4 min) to 120 °C at 50 °C/min (hold 10 min) to 220 °C at 50 °C/min (hold 6 min)

Oven Temp.: He, constant flow

Carrier Gas 40 cm/sec

Linear Velocity: FID @ 250 °C

Detector Agilent/HP6890 GC

Instrument Columns tested: Rxi-624Sil MS, ZB-624, and DB-624

Notes