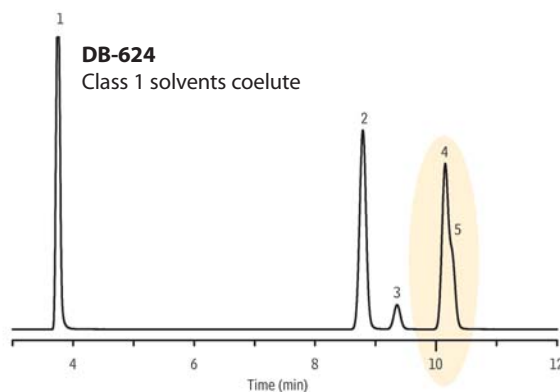
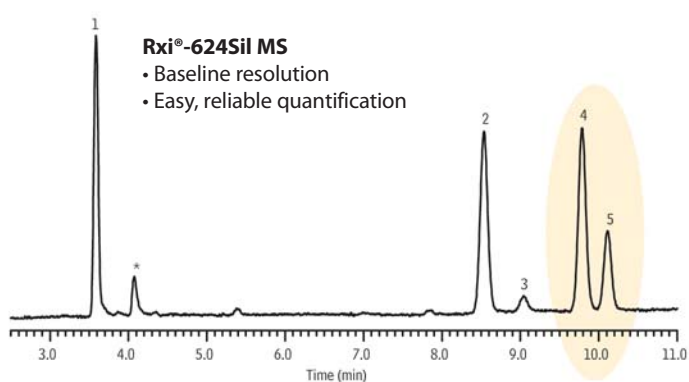


## Class 1 Residual Solvents for USP <467> Water-Soluble Articles on Rxi®-624Sil MS



GC\_PH1160

| Peaks                    | RT (min.) | Conc. (µg/mL) |
|--------------------------|-----------|---------------|
| 1. 1,1-Dichloroethene    | 3.586     | 0.07          |
| 2. 1,1,1-Trichloroethane | 8.536     | 0.08          |
| 3. Carbon tetrachloride  | 9.042     | 0.03          |
| 4. Benzene               | 9.787     | 0.02          |
| 5. 1,2-Dichloroethane    | 10.112    | 0.04          |

\* DMSO interference

**Column** Rxi®-624Sil MS, 30 m, 0.32 mm ID, 1.80 µm (cat.# 13870)  
**Sample** Residual Solvents - Class 1 (cat.# 36279)  
**Diluent:** water  
**Injection** headspace-loop split (split ratio 5:1)  
**Liner:** 1mm Split (cat.# 20972)  
**Headspace-Loop**  
 Inj. Port Temp.: 140 °C  
 Instrument: Tekmar HT3  
 Inj. Time: 1 min.  
 Transfer Line Temp.: 110 °C  
 Valve Oven Temp.: 110 °C  
 Sample Temp.: 80 °C  
 Sample Equil. Time: 60 min.  
 Vial Pressure: 10 psi  
 Pressurize Time: 0.5 min.

**Pressure**  
 Equilibration Time: 0.05 min.  
 Loop Pressure: 5 psi  
 Loop Fill Time: 0.1 min.  
**Oven**  
 Oven Temp: 40 °C (hold 20 min.) to 240 °C at 10 °C/min. (hold 20 min.)  
**Carrier Gas** He, constant flow  
 Linear Velocity: 35 cm/sec.  
 Dead Time: 1.45 min. @ 40 °C  
**Detector** FID @ 250 °C  
 Data Rate: 5 Hz  
**Instrument** Agilent/HP6890 GC  
**Acknowledgement** Teledyne Tekmar  
 Note: Columns run under identical conditions.