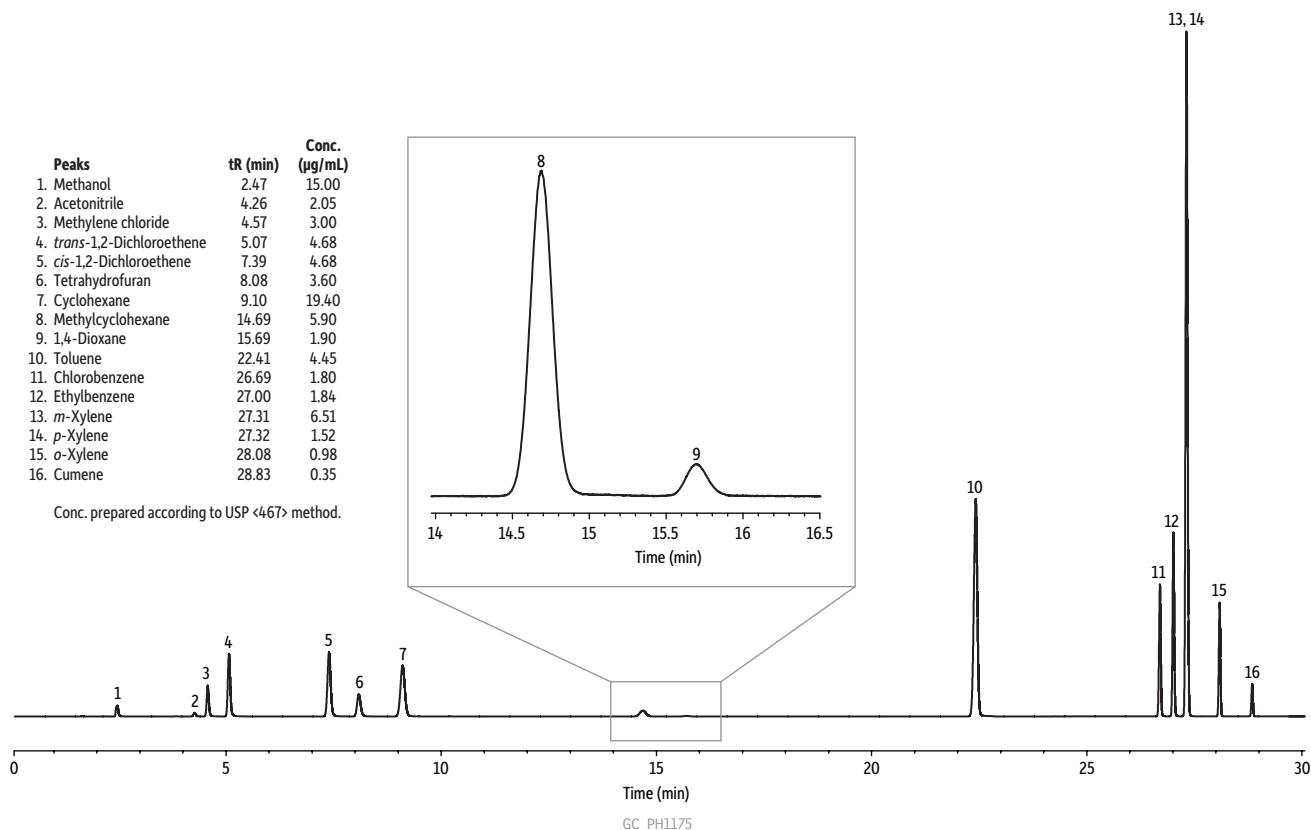


Residual Solvents Class 2 — Mix A on Rxi®-624Sil MS (G43) by USP <467>



Column	Rxi®-624Sil MS, 30 m, 0.32 mm ID, 1.80 µm (cat.# 13870)	Mixer stabilize time:	0.50 min
Sample	Residual solvents Class 2 — Mix A (2013 Rev) (cat.# 36012)	Vial Pressure:	10 psi
Diluent:	Water	Pressurize Time:	5.0 min
Injection		Pressure Equilibration Time:	0.20 min
Inj. Vol.:	1 µL headspace-loop split (split ratio 5:1)	Loop Pressure:	5.0 psi
Liner:	Premium 1.0 mm ID straight inlet liner (cat.# 23333.1)	Loop Fill Time:	2.0 min
Headspace-Loop		Oven	
Inj. Port Temp.:	140 °C	Oven Temp.:	40 °C (hold 20 min) to 240 °C at 10 °C/min (hold 20 min)
Instrument:	Tekmar HT-3	Carrier Gas	He, constant flow
Inj. Time:	1.0 min	Flow Rate:	2.2 mL/min
Transfer Line Temp.:	105 °C	Detector	FID @ 250 °C
Valve Oven Temp.:	105 °C	Make-up Gas Flow Rate:	45 mL/min
Needle Temp.:	85 °C	Make-up Gas Type:	N ₂
Sample Temp.:	80 °C	Hydrogen flow:	40 mL/min
Sample Equil. Time:	60 min	Air flow:	450 mL/min
Mixer time:	5.0 min	Data Rate:	20 Hz
Mixing level:	5	Instrument	Agilent/HP6890 GC