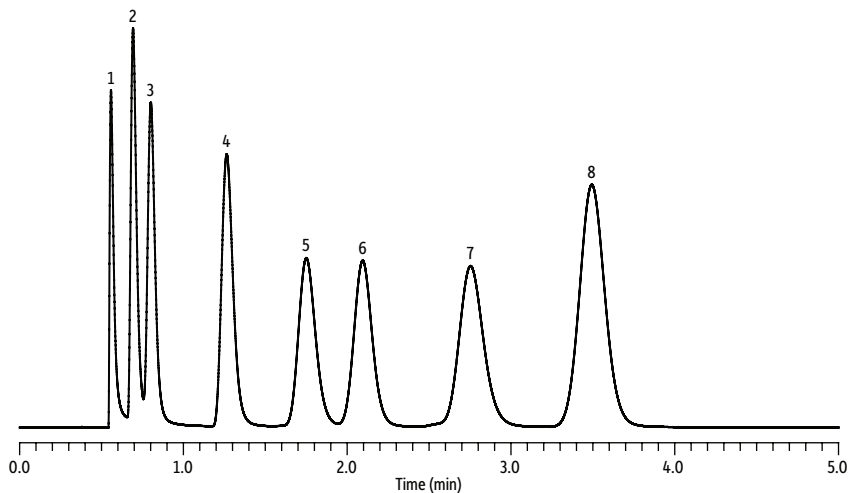


## Solvents on DiatoSorb WHP Packed Column



GC\_PH1176

### Peaks

1. Methanol
2. Ethanol
3. Acetone
4. Methyl ethyl ketone (MEK)
5. Isopropyl acetate
6. 2-Nitropropane
7. Methyl isobutyl ketone (MIBK)
8. Toluene

### Column

20% OV-101, 0.1% CW-1500, 100/120 mesh on DiatoSorb-WHP, SilcoSmooth tubing, 3 m,  $\frac{1}{8}$  in OD, 2 mm ID

### Sample

Conc.: Equal proportions of neat compounds

### Injection

Inj. Vol.: 0.1  $\mu$ L on-column  
Inj. Temp.: 200 °C

### Oven

Oven Temp.: 100 °C (hold 5 min)

### Carrier Gas

He, constant flow

Flow Rate: 40 mL/min

Detector: FID @ 250 °C

Instrument: Agilent 7890B GC

### Notes

The particle size distribution of DiatoSorb material is more uniform than that of commercially available diatomaceous earth material. For this application, the pressure required to achieve a flow rate of 40 mL/min He (@ 100 °C) on a diatomaceous earth packed column is 50 psi, whereas it is only 33.7 psi on a DiatoSorb packed column. Furthermore, the narrower particle size distribution of the DiatoSorb material results in highly efficient columns.