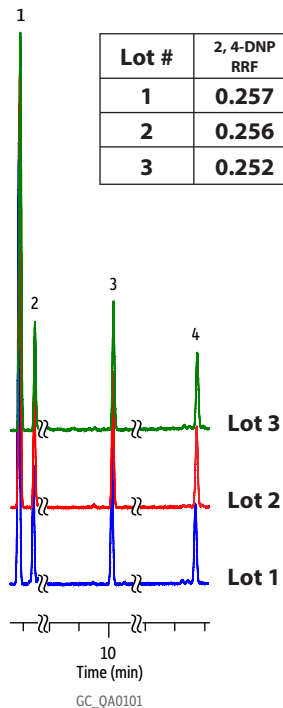


Topaz Liner Lot-to-Lot Reproducibility for QC Test Mix



Lot #	2, 4-DNP RRF	Carbaryl RRF	Coumaphos RRF
1	0.257	0.637	0.425
2	0.256	0.626	0.423
3	0.252	0.638	0.438

Peaks	t _R (min)	Conc. (µg/mL)
1. Acenaphthene (IS)	7.570	1.0
2. 2,4-Dinitrophenol (DNP)	7.668	1.0
3. Carbaryl	10.020	0.5
4. Coumaphos	13.737	0.5

Column	Rxi-5ms, 15 m, 0.25 mm ID, 0.25 µm (cat.# 13420)
Sample	Topaz liner FID test mix
Diluent:	Methylene chloride
Injection	
Inj. Vol.:	1 µL splitless (hold 1 min)
Liner:	Topaz 4.0 mm single taper liner with wool
Inj. Temp.:	250 °C
Purge Flow:	40 mL/min
Oven	
Oven Temp.:	40 °C (hold 1 min) to 300 °C at 18.5 °C/min (hold 1 min)
Carrier Gas	He, constant flow
Flow Rate:	2 mL/min
Detector	FID @ 340 °C
Make-up Gas Flow Rate:	45 mL/min
Make-up Gas Type:	N ₂
Hydrogen flow:	40 mL/min
Air flow:	400 mL/min
Data Rate:	50 Hz
Instrument	Agilent 7890A GC