

Sugars: Maple Flavored Syrup on Ultra Amino

Peak List:

1. fructose
2. glucose
3. sucrose

Sample:

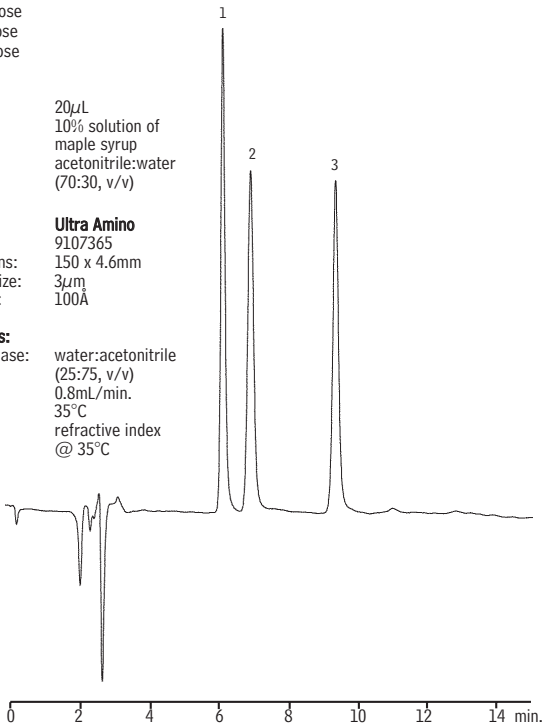
Inj.: 20 μ L
Conc.: 10% solution of
maple syrup
Solvent: acetonitrile:water
(70:30, v/v)

Column: Ultra Amino

Cat. #: 9107365
Dimensions: 150 x 4.6mm
Particle size: 3 μ m
Pore size: 100Å

Conditions:

Mobile phase: water:acetonitrile
(25:75, v/v)
Flow: 0.8mL/min.
Temp.: 35°C
Det.: refractive index
@ 35°C



LC_0159