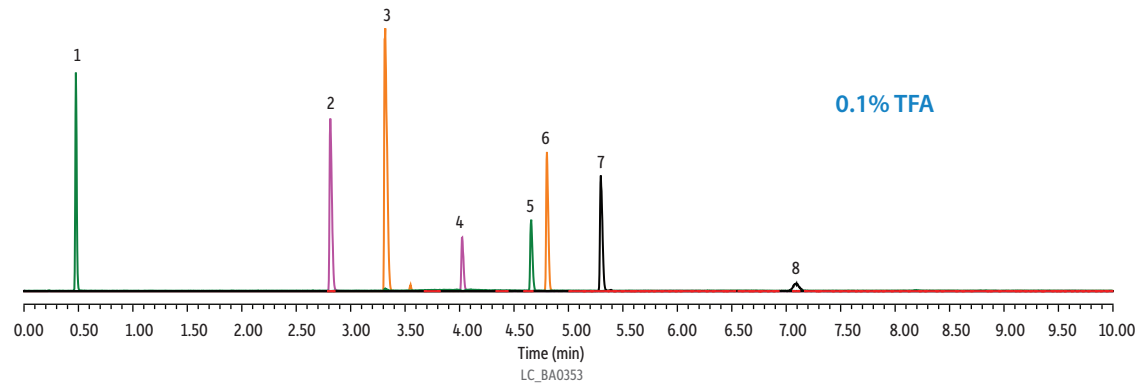
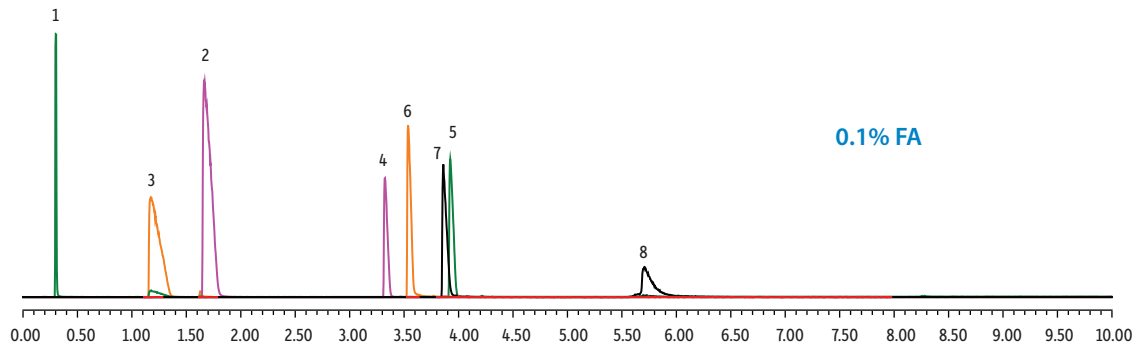


Peptides on Raptor ARC-18 Poster Figure 2: Effects of Acid Type



Column Raptor ARC-18 (cat.# 9314A12)
Dimensions: 100 mm x 2.1 mm ID
Particle Size: 2.7 µm
Pore Size: 90 Å
Temp.: 60 °C
Sample Custom peptide/small protein standard mix
Diluent: 0.1% Formic acid in water
Conc.: 0.2–0.4 mg/mL
Inj. Vol.: 2 µL
Mobile Phase
A: Water + acid
B: Acetonitrile + acid

Time (min)	Flow (mL/min)	%A	%B
0.00	1	95	5
1.00	1	95	5
10.0	1	50	50
10.1	1	95	5
13.0	1	95	5

Detector MS
Ion Mode: ESI+
Mode: SRM
Instrument UHPLC