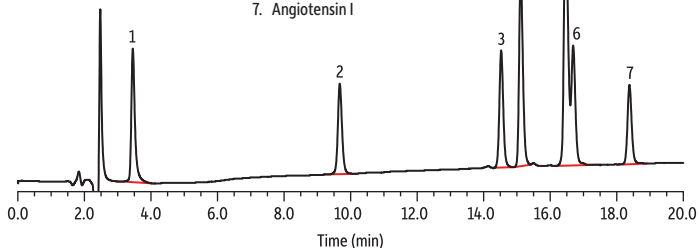


# Peptide Mix on Viva C18

## Peaks

1. Val-Tyr
2. Val-Tyr-Val
3. Meth enkephalin
4. Val-4-angiotensin III
5. Angiotensin II, III
6. Leucine enkephalin
7. Angiotensin I



LC\_BC0386

**Column** Viva C18 (cat.# 9514562)  
**Dimensions:** 150 mm x 2.1 mm ID  
**Particle Size:** 5  $\mu$ m  
**Pore Size:** 300 Å  
**Temp.:** ambient  
**Sample** peptide test mix  
**Inj. Vol.:** 20  $\mu$ L  
**Mobile Phase** A: 0.08% trifluoroacetic acid in water (pH 2.0)  
B: 0.08% TFA in acetonitrile

Time (min)	%B
0	10
20	40

**Flow:** 2.0 mL/min  
**Detector** UV/Vis @ 214 nm  
**Notes** \* High levels of trace metals (~100 ppm) in the silica enhance this separation.