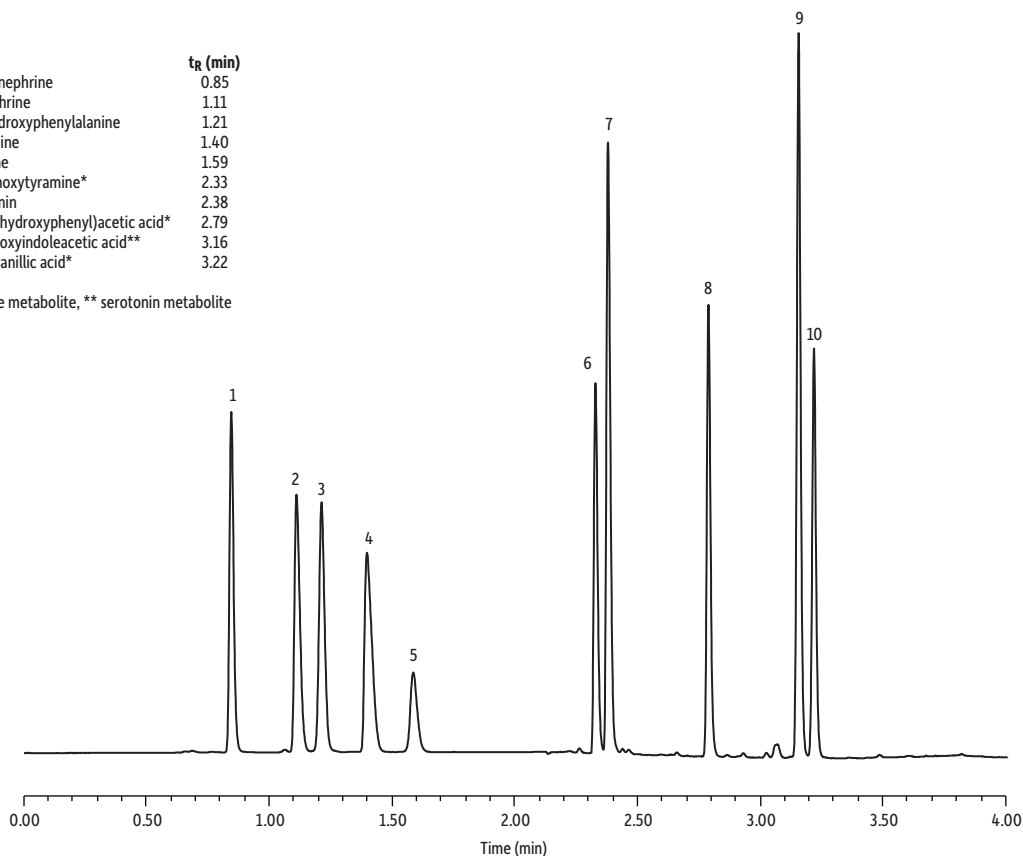


Catecholamines, Serotonin, and Related Compounds on Raptor™ Biphenyl

Peaks	tr (min)
1. Norepinephrine	0.85
2. Epinephrine	1.11
3. L-Dihydroxyphenylalanine	1.21
4. Dopamine	1.40
5. Tyrosine	1.59
6. 3-Methoxytyramine*	2.33
7. Serotonin	2.38
8. (3,4-Dihydroxyphenyl)acetic acid*	2.79
9. 5-Hydroxyindoleacetic acid**	3.16
10. Homovanillic acid*	3.22

* Dopamine metabolite, ** serotonin metabolite



LC_CF0560

Column Raptor™ Biphenyl (cat.# 9309A62)
Dimensions: 150 mm x 2.1 mm ID
Particle Size: 2.7 µm
Temp.: 30 °C

Sample
Diluent: Water
Conc.: 50 µg/mL
Inj. Vol.: 1 µL

Mobile Phase
A: 0.1% Formic acid in water
B: 0.1% Formic acid in acetonitrile

Time (min)	Flow (mL/min)	%A	%B
0.00	0.4	100	0
4.00	0.4	30	70
4.01	0.4	100	0
5.00	0.4	100	0

Detector Water Acquity® PDA @ 280 nm
Instrument Waters Acquity® UPLC H-Class