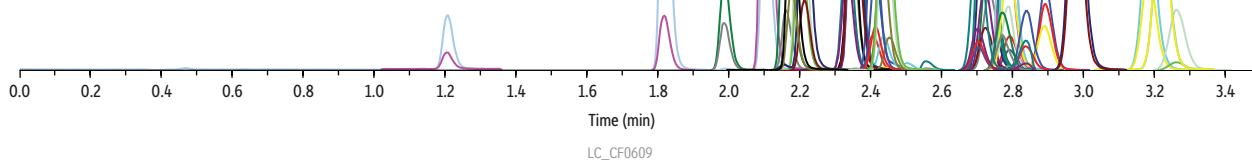


Anti-Depressant Drug Panel on Raptor™ Biphenyl by LC-MS/MS

Peaks	t _R (min)	Precursor Ion	Product Ion	Product Ion
1. Phenelzine sulfate	1.19	137.2	105.1	77.1
2. O-desmethylvenlafaxine	1.81	264.1	58.1	107.0
3. (+/-)-Hydroxybupropion	1.98	256.0	130.2	166.0
4. Bupropion	2.09	240.0	184.1	130.2
5. N-desmethylmirtazapine	2.15	252.1	195.1	209.2
6. Venlafaxine	2.16	278.4	260.4	121.2
7. Milnacipran	2.19	247.2	100.1	129.1
8. Mirtazapine	2.20	266.1	195.1	72.1
9. Didesmethylcitalopram	2.32	297.1	261.9	109.1
10. N-desmethylcitalopram	2.33	311.1	262.1	109.1
11. Citalopram	2.34	325.2	109.1	262.0
12. Escitalopram	2.34	325.3	109.1	261.9
13. E/Z-desmethyldoxepin	2.39	266.1	107.1	115.0
14. Fluvoxamine	2.40	319.3	71.1	257.8
15. Norfluoxetine	2.41	296.3	134.3	104.9
16. E/Z-doxepin	2.42	280.1	107.2	77.1
17. Trazodone	2.42	372.3	176.1	148.0
18. Fluoxetine	2.44	310.1	148.0	115.1
19. Protriptyline	2.68	264.1	191.1	165.2
20. Desipramine	2.71	267.1	72.1	193.1
21. Isocarboxazid	2.71	232.0	91.1	65.2
22. Amoxapine	2.72	314.2	271.0	193.1
23. Paroxetine	2.75	330.2	192.2	70.1
24. Imipramine	2.76	281.1	86.2	58.1
25. Duloxetine	2.77	298.1	154.1	188.2
26. Maprotiline	2.77	278.1	250.2	191.0
27. Nortriptyline	2.82	264.1	91.1	115.2
28. Amitriptyline	2.88	278.1	91.1	202.1
29. Trimipramine	2.95	295.2	100.2	58.2
30. Clomipramine	3.17	315.3	86.0	58.0
31. Sertraline	3.20	306.2	158.9	275.1
32. Dehydro aripiprazole	3.25	446.2	285.0	98.1



Column Raptor™ Biphenyl (cat.# 9309A12)
 Dimensions: 100 mm x 2.1 mm ID
 Particle Size: 2.7 µm
 Guard Column: Raptor™ Biphenyl EXP® guard column cartridge 5 mm, 2.1 mm ID, 2.7 µm (cat.# 9309A0252)
 Temp.: 30 °C

Sample
 Diluent: Water
 Conc.: 10 ng/mL
 Inj. Vol.: 5 µL

Mobile Phase
 A: Water + 0.1% formic acid
 B: Methanol + 0.1% formic acid

Time (min)	Flow (mL/min)	%A	%B
0.00	0.6	90	10
1.50	0.6	40	60
3.50	0.6	30	70
3.51	0.6	90	10
5.50	0.6	90	10

Detector MS/MS
 Ion Mode: ESI+
 Mode: Scheduled MRM
 Instrument: UHPLC