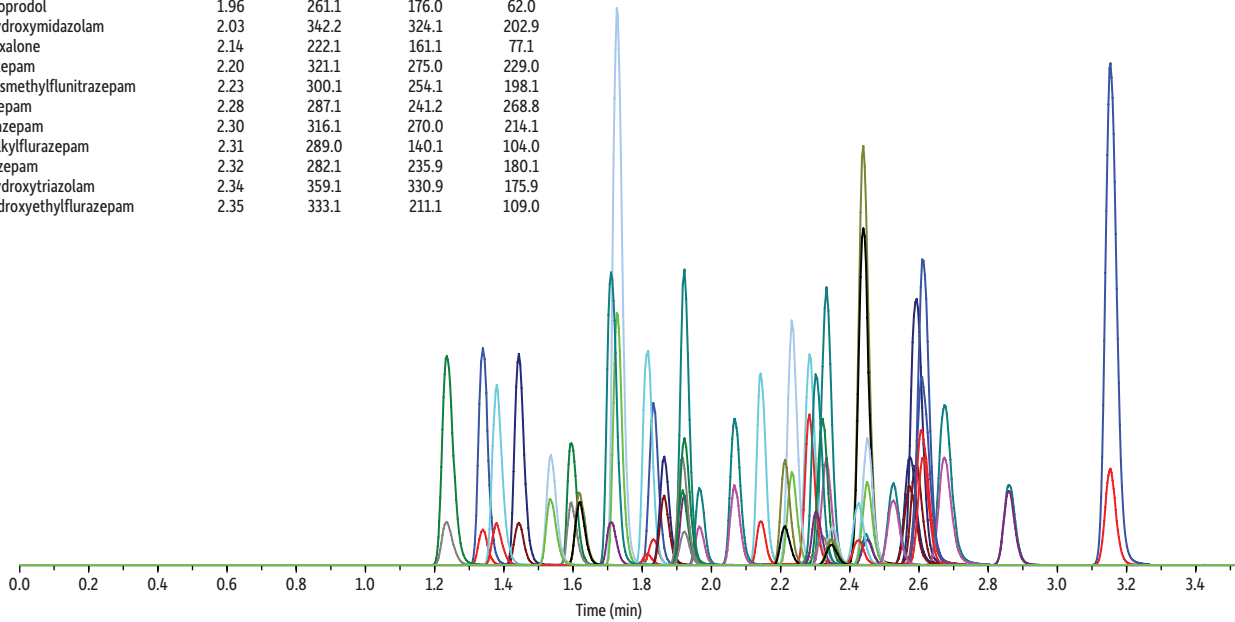


# Anti-Anxiety Drug Panel on Raptor™ Biphenyl by LC-MS/MS

Peaks	tr (min)	Precursor Ion	Product Ion	Product Ion	Peaks	tr (min)	Precursor Ion	Product Ion	Product Ion
1. 7-Aminonitrazepam	1.22	252.2	121.1	94.2	27. $\alpha$ -Hydroxyalprazolam	2.42	325.1	297.0	216.2
2. Norketamine	1.34	224.1	125.0	89.1	28. Methaqualone	2.44	251.1	132.2	91.1
3. Zolpidem Phenyl-4-carboxylic acid	1.38	338.2	265.1	219.0	29. Nordiazepam	2.44	271.0	139.9	208.0
4. Ketamine	1.45	238.1	125.1	89.1	30. Phenazepam	2.44	349.1	206.2	179.0
5. Zopiclone	1.54	389.2	245.0	217.2	31. Zaleplon	2.53	306.1	264.0	236.0
6. Meprobamate	1.59	219.1	158.2	97.0	32. Triazolam	2.58	343.1	307.9	315.0
7. 7-Aminoclonazepam	1.60	286.1	121.2	250.1	33. Flunitrazepam	2.59	314.2	267.9	239.1
8. Zolpidem	1.72	308.2	235.2	218.9	34. Estazolam	2.61	295.1	266.9	205.1
9. Diphenhydramine	1.74	256.1	167.0	152.1	35. Temazepam	2.61	301.1	255.1	282.9
10. Flurazepam	1.83	388.2	315.2	183.0	36. Alprazolam	2.68	309.1	280.9	204.9
11. Buspirone	1.86	386.3	122.1	95.0	37. Diazepam	2.85	285.1	153.9	192.9
12. 7-Aminoflunitrazepam	1.87	284.1	135.0	227.1	38. Prazepam	3.14	325.2	271.0	139.9
13. Chlordiazepoxide	1.88	300.1	227.0	282.0					
14. Midazolam	1.92	326.2	291.1	248.9					
15. Cyclobenzaprine	1.94	276.2	215.0	189.0					
16. Carisoprodol	1.96	261.1	176.0	62.0					
17. $\alpha$ -Hydroxyamidazolam	2.03	342.2	324.1	202.9					
18. Metaxalone	2.14	222.1	161.1	77.1					
19. Lorazepam	2.20	321.1	275.0	229.0					
20. N-Desmethylflunitrazepam	2.23	300.1	254.1	198.1					
21. Oxazepam	2.28	287.1	241.2	268.8					
22. Clonazepam	2.30	316.1	270.0	214.1					
23. Desalkylflurazepam	2.31	289.0	140.1	104.0					
24. Nitrazepam	2.32	282.1	235.9	180.1					
25. $\alpha$ -Hydroxytriazolam	2.34	359.1	330.9	175.9					
26. 2-Hydroxyethylflurazepam	2.35	333.1	211.1	109.0					



LC\_CF0615

**Column** Raptor™ Biphenyl (cat.# 9309A12)  
**Dimensions:** 100 mm x 2.1 mm ID  
**Particle Size:** 2.7  $\mu$ m  
**Guard Column:** Raptor™ Biphenyl EXP® guard column cartridge 5 mm, 2.1 mm ID, 2.7  $\mu$ m (cat.# 9309A0252)  
**Temp.:** 30 °C  
**Sample**  
**Diluent:** Water  
**Conc.:** 10 ng/mL  
**Inj. Vol.:** 5  $\mu$ L  
**Mobile Phase**  
**A:** Water + 0.1% formic acid  
**B:** Methanol + 0.1% formic acid

Time (min)	Flow (mL/min)	%A	%B
0.00	0.6	70	30
1.50	0.6	20	80
3.00	0.6	5	95
3.50	0.6	5	95
3.51	0.6	70	30
5.50	0.6	70	30

**Detector** MS/MS  
**Ion Mode:** ESI+  
**Mode:** Scheduled MRM  
**Instrument** UHPLC