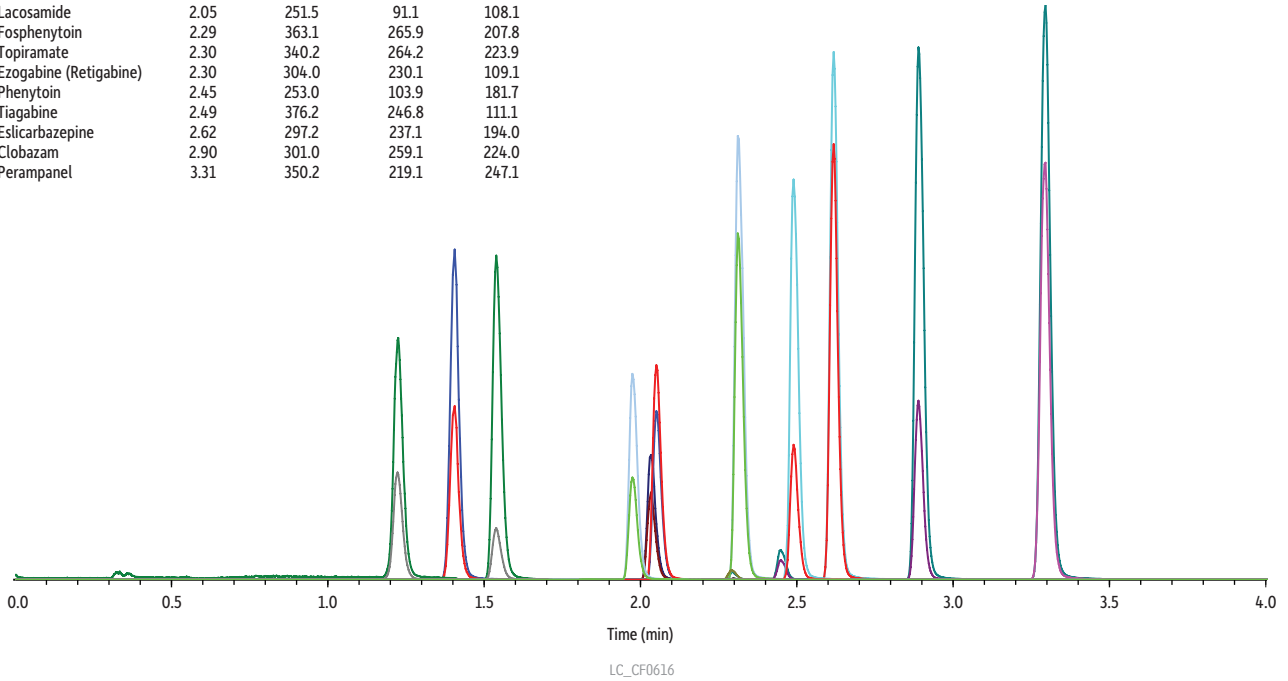


Anti-Epileptic Drug Panel on Raptor™ Biphenyl by LC-MS/MS

Peaks	tr (min)	Precursor Ion	Product Ion	Product Ion
1. Pregabalin	1.24	160.2	142.1	55.0
2. Gabapentin	1.42	172.2	154.0	137.1
3. Levetiracetam	1.54	171.1	125.9	69.2
4. Zonisamide	1.98	212.9	132.1	77.1
5. Felbamate	2.03	239.1	117.1	177.8
6. Lacosamide	2.05	251.5	91.1	108.1
7. Fosphenytoin	2.29	363.1	265.9	207.8
8. Topiramate	2.30	340.2	264.2	223.9
9. Ezogabine (Retigabine)	2.30	304.0	230.1	109.1
10. Phenytoin	2.45	253.0	103.9	181.7
11. Tiagabine	2.49	376.2	246.8	111.1
12. Eslicarbazepine	2.62	297.2	237.1	194.0
13. Clobazam	2.90	301.0	259.1	224.0
14. Perampanel	3.31	350.2	219.1	247.1



Column Raptor™ Biphenyl (cat.# 9309A12)
Dimensions: 100 mm x 2.1 mm ID
Particle Size: 2.7 µm
Guard Column: Raptor™ Biphenyl EXP® guard column cartridge 5 mm, 2.1 mm ID, 2.7 µm (cat.# 9309A0252)
Temp.: 40 °C

Sample
Diluent: Water
Conc.: 25 ng/mL
Inj. Vol.: 5 µL

Mobile Phase
A: Water + 0.1% formic acid
B: Methanol + 0.1% formic acid

Time (min)	Flow (mL/min)	%A	%B
0.00	0.6	90	10
2.00	0.6	20	80
3.50	0.6	0	100
3.51	0.6	90	10
5.50	0.6	90	10

Detector MS/MS
Ion Mode: ESI+
Mode: Scheduled MRM
Instrument UHPLC