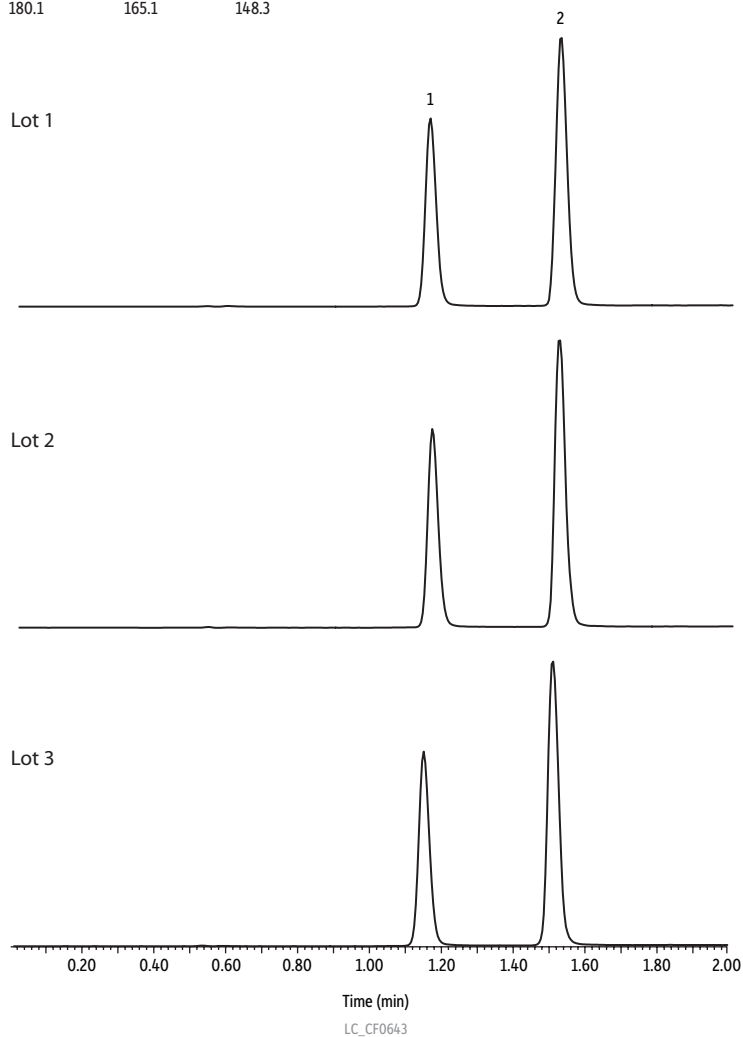


Lot to Lot Comparison of Metanephrines on the Raptor™ FluoroPhenyl by LC-MS/MS

| Peaks | Precursor Ion | Product Ion 1 | Product Ion 2 |
|--------------------|---------------|---------------|---------------|
| 1. Normetanephrine | 166.1 | 121.1 | 134.0 |
| 2. Metanephrine | 180.1 | 165.1 | 148.3 |



Column Raptor™ FluoroPhenyl (cat.# 9319A12)
Dimensions: 100 mm x 2.1 mm ID
Particle Size: 2.7 µm
Temp.: 30 °C
Sample
Conc.: 20 ng/mL in water
Inj. Vol.: 5 µL
Mobile Phase
A: Water + 0.2% formic acid
B: Methanol

| Time (min) | Flow (mL/min) | %A | %B |
|------------|---------------|----|----|
| 0.00 | 0.4 | 98 | 2 |
| 2.00 | 0.4 | 60 | 40 |
| 2.01 | 0.4 | 98 | 2 |
| 6.00 | 0.4 | 98 | 2 |

Detector MS/MS
Ion Mode: ESI+
Mode: MRM
Instrument UHPLC