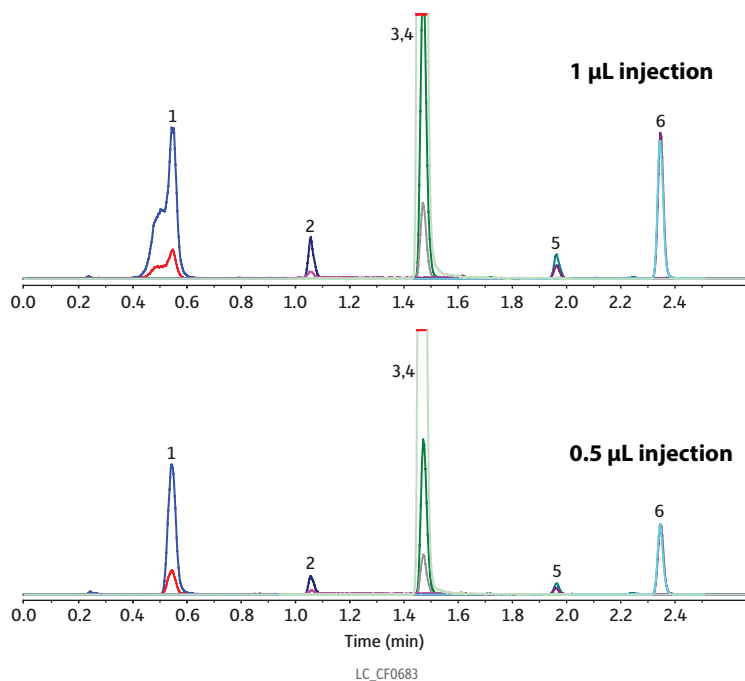


Antiretroviral Drug Poster Figure 1: Direct Injection of Protein Precipitated 25 ng/mL Calibration Standard Prepared in Human Plasma



Peaks	tr (min)	Precursor Ion	Product Ion	Product Ion
1. Lamivudine	0.55	230.0	112.0	95.1
2. Zidovudine	1.06	268.1	127.2	110.1
3. Nevirapine-d3 (IS)	1.46	270.3	229.1	-
4. Nevirapine	1.47	267.3	225.9	196.9
5. Efavirenz	1.96	316.1	243.8	168.1
6. Ritonavir	2.35	721.5	140.1	296.0

Column Raptor Biphenyl (cat.# 9309A52)
Dimensions: 50 mm x 2.1 mm ID
Particle Size: 2.7 µm
Pore Size: 90 Å
Guard Column: Raptor Biphenyl EXP guard column cartridge 5 mm, 2.1 mm ID, 2.7 µm (cat.# 9309A0252)
Temp.: 30 °C

Standard/Sample
Conc.: 25 ng/mL

Mobile Phase
A: Water + 0.01% acetic acid
B: Methanol + 0.01% acetic acid

Time (min)	Flow (mL/min)	%A	%B
0.00	0.8	90	10
1.00	0.8	40	60
2.50	0.8	0	100
2.51	0.8	90	10
4.50	0.8	90	10

Max Pressure: 400 bar

Detector MS/MS

Ion Mode: ESI+

Mode: Scheduled MRM

Instrument UHPLC

Sample Preparation A 100 µL aliquot of fortified human plasma was protein precipitated with 300 µL acetonitrile containing isotopically labeled internal standard in a 1.3 mL 96-well plate (cat.# 26495). The plate was sealed and centrifuged for 10 minutes at 4300 rpm and 8 °C