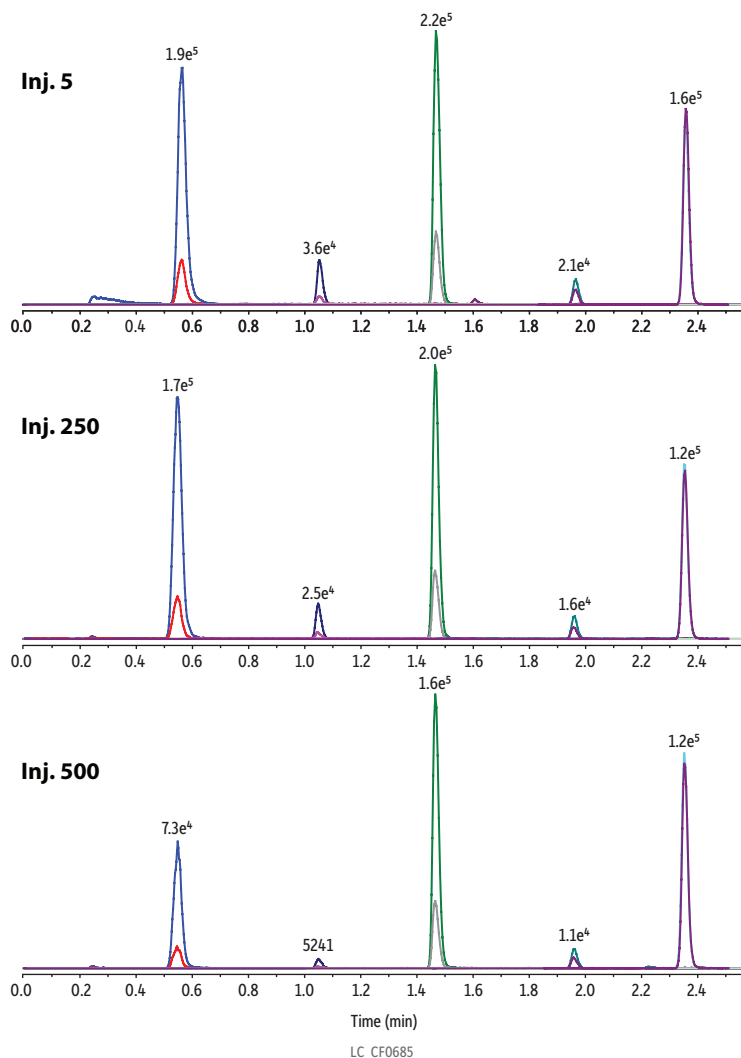


Antiretroviral Drug Poster Figure 3: Effects on Column Lifetime for Direct Injection of 100 ng/mL Protein Precipitated Human Plasma Extracts



Peaks	tr (min)	Precursor Ion	Product Ion	Product Ion
1. Lamivudine	0.55	230.0	112.0	95.1
2. Zidovudine	1.06	268.1	127.2	110.1
3. Nevirapine-d3 (IS)	1.46	270.3	229.1	-
4. Nevirapine	1.47	267.3	225.9	196.9
5. Efavirenz	1.96	316.1	243.8	168.1
6. Ritonavir	2.35	721.5	140.1	296.0

Column
 Raptor Biphenyl (cat.# 9309A52)
 Dimensions: 50 mm x 2.1 mm ID
 Particle Size: 2.7 µm
 Pore Size: 90 Å
 Guard Column: Raptor Biphenyl EXP guard column cartridge 5 mm, 2.1 mm ID, 2.7 µm (cat.# 9309A0252)
 Temp.: 30 °C

Standard/Sample
 Conc.: 100 ng/mL
 Inj. Vol.: 0.5 µL

Mobile Phase
 A: Water + 0.01% acetic acid
 B: Methanol + 0.01% acetic acid

Time (min)	Flow (mL/min)	%A	%B
0.00	0.8	90	10
1.00	0.8	40	60
2.50	0.8	0	100
2.51	0.8	90	10
4.50	0.8	90	10

Max Pressure: 400 bar
Detector: MS/MS
Ion Mode: ESI+
Mode: Scheduled MRM
Instrument: UHPLC
Sample Preparation: A 100 µL aliquot of fortified human plasma was protein precipitated with 300 µL acetonitrile containing isotopically labelled internal standard in a 1.3 mL 96-well plate (cat.# 26495). The plate was sealed and centrifuged for 10 minutes at 4300 rpm and 8 °C.