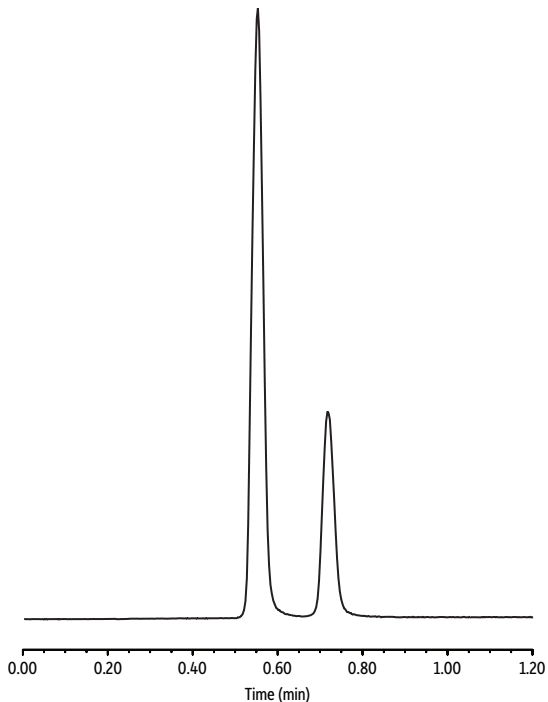


Methylmalonic Acid (MMA) on Force C18 by LC-MS



LC_CF0696

Peaks	t _R (min)	SIM
1. Succinic acid	0.553	117.0
2. Methylmalonic acid (MMA)	0.719	117.0

Column Force C18 (cat.# 9634252)

Dimensions: 50 mm x 2.1 mm ID

Particle Size: 1.8 µm

Pore Size: 100 Å

Temp.: 30 °C

Sample

Diluent: Water

Conc.: 20 µg/mL

Inj. Vol.: 2 µL

Mobile Phase

A: Water, 0.5% formic acid

B: Methanol, 0.5% formic acid

Time (min)	Flow (mL/min)	%A	%B
0.00	0.5	95	5
1.50	0.5	95	5
1.51	0.5	5	95
2.00	0.5	5	95
2.01	0.5	95	5
4.00	0.5	95	5

Max Pressure: 750 bar

Detector MS

Acquisition Type: SIM

Interface: ESI-

Instrument UHPLC