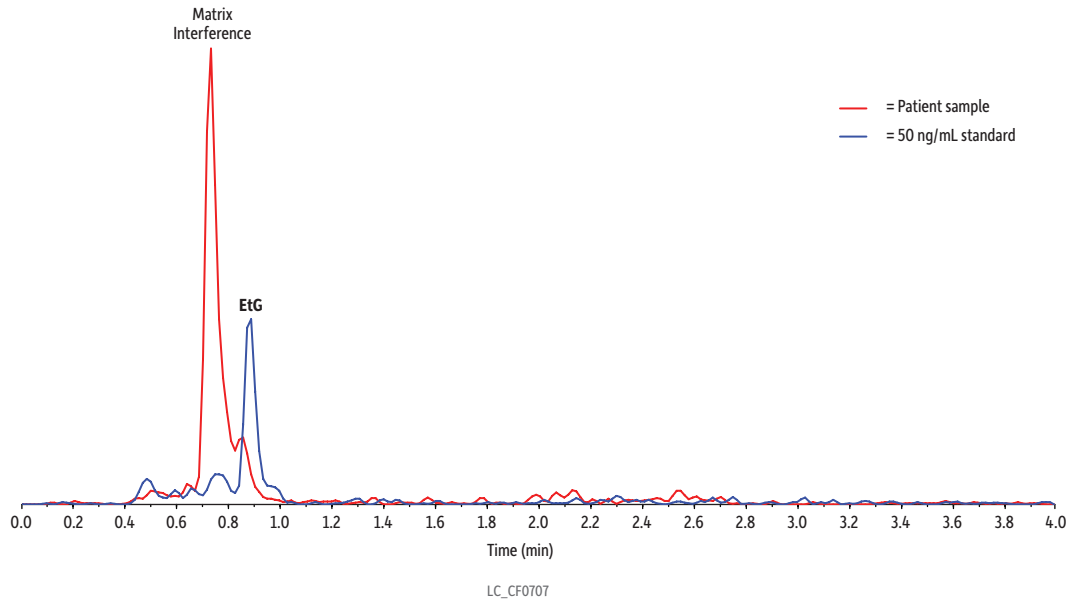


# EtG Matrix Interference in Urine on Raptor EtG/EtS (Overlay of Patient Sample and Standard)



Peaks	Precursor Ion	Product Ion
1. Ethyl-β-D-glucuronide	220.8	74.8

**Column** Raptor EtG/EtS (cat.# 9325A12)  
**Dimensions:** 100 mm x 2.1 mm ID  
**Particle Size:** 2.7 μm  
**Pore Size:** 90 Å  
**Guard Column:** UltraShield UHPLC precolumn filter, 0.2 μm frit (cat.# 25809)  
**Temp.:** 35 °C  
**Sample**  
**Diluent:** 0.1% Formic acid in water  
**Conc.:** 50 μL of the sample or standard was diluted with 950 μL of a working internal standard (25 ng/mL ETS-d5/100 ng/mL EtG-d5 in 0.1% formic acid in water). The sample was vortexed at 3500 rpm for 10 seconds to mix. The sample was then centrifuged at 3000 rpm for 5 minutes at 10 °C. The autosampler needle was adjusted to inject from the supernatant.  
**Inj. Vol.:** 10 μL

**Mobile Phase**  
**A:** 0.1% Formic acid in water  
**B:** 0.1% Formic acid in acetonitrile

Time (min)	Flow (mL/min)	%A	%B
0.00	0.5	95	5
2.50	0.5	65	35
2.51	0.5	95	5
4.00	0.5	95	5

**Detector** MS/MS  
**Ion Mode:** ESI-  
**Mode:** MRM  
**Instrument** HPLC

**Notes**  
**Reference Standards**  
 Ethyl-β-D-glucuronide (cat.# 34101)  
 Ethyl-β-D-glucuronide-d5 (cat.# 34102)  
 Ethyl sulfate sodium salt (cat.# 34103)  
 Ethyl sulfate-d5 sodium salt (cat.# 34104)