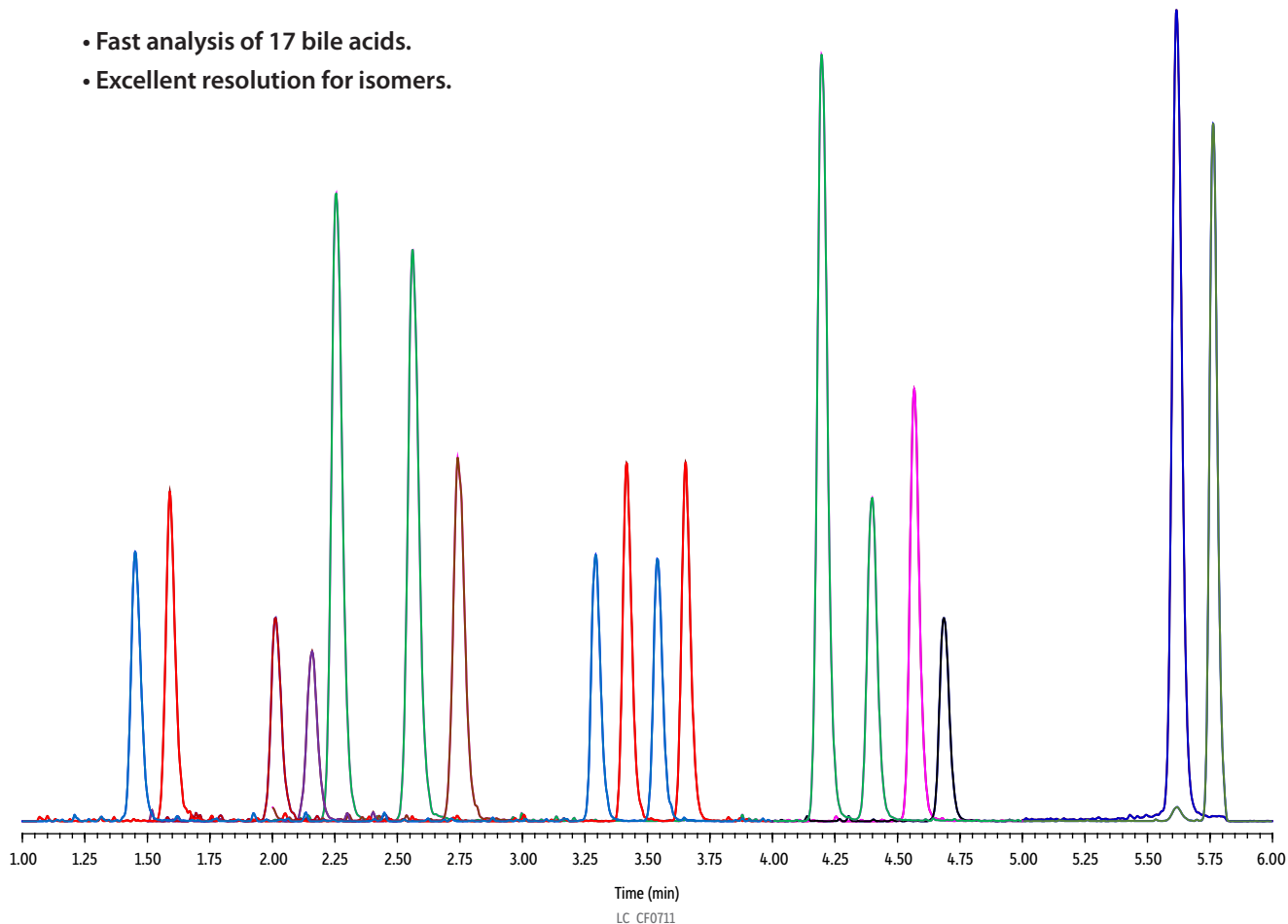


Bile Acids in Human Plasma on Raptor C18 (1.8 µm) by LC-MS/MS

- Fast analysis of 17 bile acids.
- Excellent resolution for isomers.



Column Raptor C18 (cat.# 9304252)
Dimensions: 50 mm x 2.1 mm ID
Particle Size: 1.8 µm
Pore Size: 90 Å
Guard Column: UltraShield UHPLC precolumn filter 0.2 µm (cat.# 25810)
Temp.: 60 °C
Sample
Diluent: 70:30 Water:methanol
Inj. Vol.: 3 µL
Mobile Phase
A: 5 mM Ammonium acetate in water
B: 50:50 Acetonitrile:methanol

Time (min)	Flow (mL/min)	%A	%B
0.00	0.5	65	35
2.00	0.5	60	40
2.50	0.5	55	45
3.50	0.5	50	50
4.60	0.5	45	55
5.70	0.5	20	80
5.90	0.8*	5	95
6.50	0.8*	5	95
6.51	0.5	65	35
8.50	0.5	65	35

Peaks	tr (min)	Conc. (ng/mL)	Precursor Ion	Product Ion
1. Glycoursodeoxycholic acid (GUDCA)	1.45	540	448.4	74.1
2. Tauroursodeoxycholic acid (TUDCA)	1.59	1,080	498.4	80.1
3. Glycocholic acid (GCA)	2.01	540	464.3	74.2
4. Taurocholic acid (TCA)	2.16	1,080	514.4	80.0
5. Ursodeoxycholic acid (UDCA)	2.25	360	391.4	391.4
6. Hyodeoxycholic acid (HDCA)	2.56	360	391.4	391.4
7. Cholic acid (CA)	2.74	90	407.3	407.2
8. Glycochenodeoxycholic acid (GCDCA)	3.29	540	448.4	74.1
9. Taurochenodeoxycholic acid (TCDCA)	3.42	1,080	498.4	80.1
10. Glycodeoxycholic acid (GDCA)	3.54	540	448.4	74.1
11. Taurodeoxycholic acid (TDCA)	3.65	1,080	498.4	80.1
12. Chenodeoxycholic acid (CDCA)	4.20	360	391.4	391.4
13. Deoxycholic acid (DCA)	4.40	90	391.4	391.4
14. Glycolithocholic acid (GLCA)	4.57	540	432.3	74.0
15. Taurolithocholic acid (TLCA)	4.69	1,080	482.4	80.0
16. Dehydro lithocholic acid (DHLCA)	5.62	90	373.3	373.3
17. Lithocholic acid (LCA)	5.76	180	375.5	375.3

Detector MS/MS
Ion Mode: ESI-
Mode: MRM
Instrument UHPLC
Notes *The flow rate was increased to 0.8 mL/min to more thoroughly flush phospholipids from the analytical column, thereby reducing matrix effects.
 Want even better performance when analyzing metal-sensitive compounds? Check out Inert LC columns at www.restek.com/inert.

