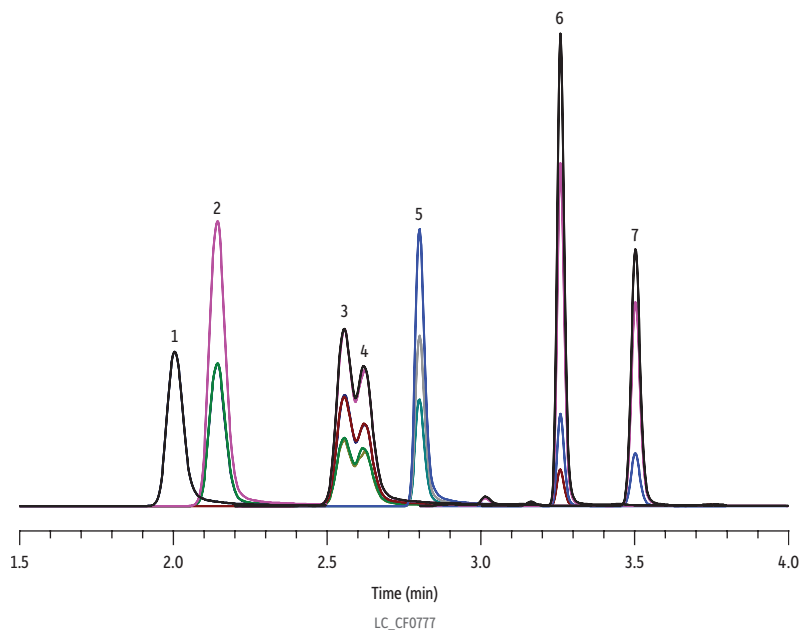


Barbiturates, THC-COOH, and THCA-A on Force Biphenyl by LC-MS/MS



Peaks	tr (min)	Conc. (ng/mL)	Precursor	Product 1	Product 2
1. Phenobarbital	2.01	500	230.9	42.1	-
2. Butalbital	2.14	500	223.0	180.2	42.1
3. Amobarbital	2.56	500	225.0	182.2	42.1
4. Pentobarbital	2.62	500	225.0	182.2	42.1
5. Secobarbital	2.81	500	337.0	194.2	42.1
6. THC-COOH	3.26	5	343.0	299.2	245.1
7. THCA-A	3.58	5	357.1	313.3	245.1

Column Force Biphenyl (cat.# 962935E)
 Dimensions: 50 mm x 3.0 mm ID
 Particle Size: 3 µm
 Pore Size: 100 Å
 Guard Column: Force Biphenyl EXP guard column cartridge 5 mm, 3 mm ID, 5 µm (cat.# 962950253)
 Temp.: 30 °C

Standard/Sample Phenobarbital (cat.# 34037)
 Pentobarbital (cat.# 34036)
 Butalbital (cat.# 34032)
 Secobarbital (cat.# 34038)
 (±)11-Nor-9-carboxy-D9-THC (cat.# 34068)
 d9-Tetrahydrocannabinolic acid A (cat.# 34111)

Diluent: 1:9 Urine:water
Inj. Vol.: 1 µL

Mobile Phase
 A: Water, 0.1% formic acid
 B: Methanol, 0.1% formic acid

Time (min)	Flow (mL/min)	%A	%B
0.00	0.8	55	45
2.00	0.8	40	60
2.50	0.8	0	100
4.00	0.8	0	100
4.01	0.8	55	45
5.00	0.8	55	45

Detector MS/MS
Ion Source: Electrospray
Ion Mode: ESI-

Sample Preparation A 100 µL aliquot of urine was spiked with analytes and diluted with 900 µL of MS water in a 2 mL screw-thread vial (cat.# 21143) and capped with a short-cap, screw-vial closure (cat.#24498). The sample was vortexed for 10 seconds and injected for LC-MS/MS analysis.

Notes The analytical and guard columns were equipped with an UltraShield precolumn filter (cat. 25809).