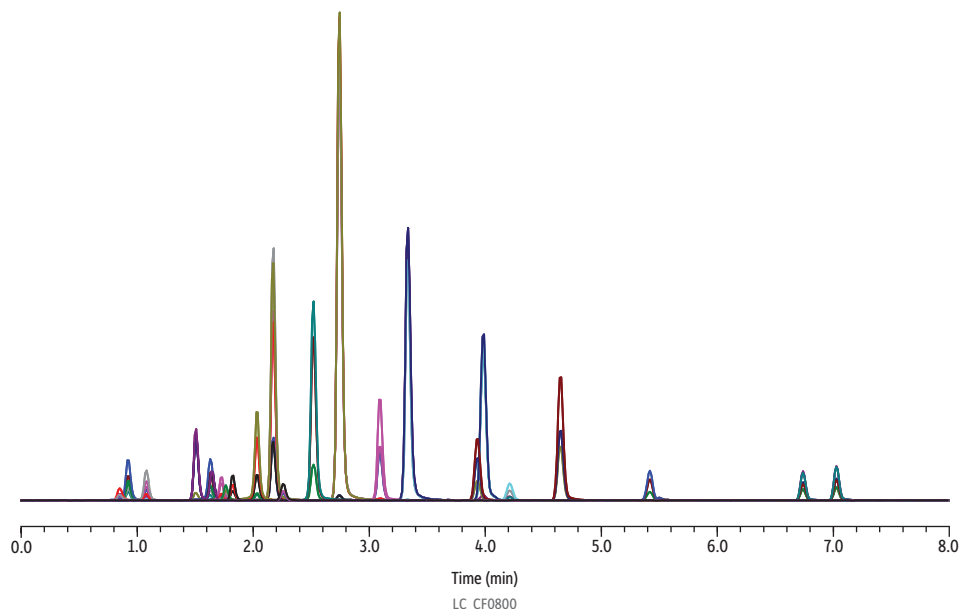


Drugs of Abuse on Raptor Biphenyl (Figure 3 for Biphenyl Advantage Article)



Peaks	tr (min)	Precursor	Product Ion 1	Product Ion 2
1. Morphine	0.85	286.2	152.1	165.0
2. Oxymorphone	0.92	302.1	227.2	198.2
3. Hydromorphone	1.08	286.2	184.9	156.9
4. Methamphetamine	1.51	150.3	91.1	119.0
5. Noroxycodone	1.63	302.1	227.0	197.9
6. Naloxone	1.64	328.3	310.1	212.3
7. Phentermine	1.65	150.2	91.1	133.1
8. Norhydrocodone	1.73	286.1	199.0	128.2
9. Codeine	1.76	300.2	152.0	165.1
10. 6-Acetylmorphine	1.82	328.2	165.0	211.0
11. Hydrocodone	2.03	300.1	199.0	128.0
12. O-Desmethylvenlafaxine	2.17	264.1	58.1	107.0
13. Lamotrigine	2.26	256.0	211.1	145.0
14. Hydroxybupropion	2.52	256.0	130.2	166.0
15. Tramadol	2.74	264.2	58.0	77.1
16. 7-Aminoclonazepam	3.09	286.1	121.2	250.1
17. Mirtazapine	3.33	266.1	195.1	72.1
18. Citalopram	3.93	325.2	109.1	262.0
19. Nortriptyline	4.65	264.1	91.1	115.2
20. Alpha-hydroxyalprazolam	5.42	325.1	297	216.2
21. CBD	6.74	315.0	193.0	123.0
22. 9-THC	7.03	315.2	193.0	123.2

Column Raptor Biphenyl (cat.# 9309A52)
Dimensions: 50 mm x 2.1 mm ID
Particle Size: 2.7 µm
Pore Size: 90 Å
Guard Column: Raptor Biphenyl EXP guard column cartridge 5 mm, 2.1 mm ID, 2.7 µm (cat.# 9309A0252)
Temp.: 45 °C

Standard/Sample
Diluent: 50:50 Water:methanol
Conc.: 50 ng/mL
Inj. Vol.: 1 µL

Mobile Phase
A: Water, 0.1% formic acid
B: Methanol, 0.1% formic acid

Time (min)	Flow (mL/min)	%A	%B
0.00	0.6	90	10
6.00	0.6	25	75
7.00	0.6	0	100
8.00	0.6	0	100
8.01	0.6	90	10
9.00	0.6	90	10

Detector Shimadzu 8060
Ion Source: Electrospray
Ion Mode: ESI+
Instrument Shimadzu Nexera X2
Sample Preparation The sample was aliquoted into 2 mL, screw-thread vials (cat.# 21143) and capped with short-cap, screw-vial closures (cat.# 24498).