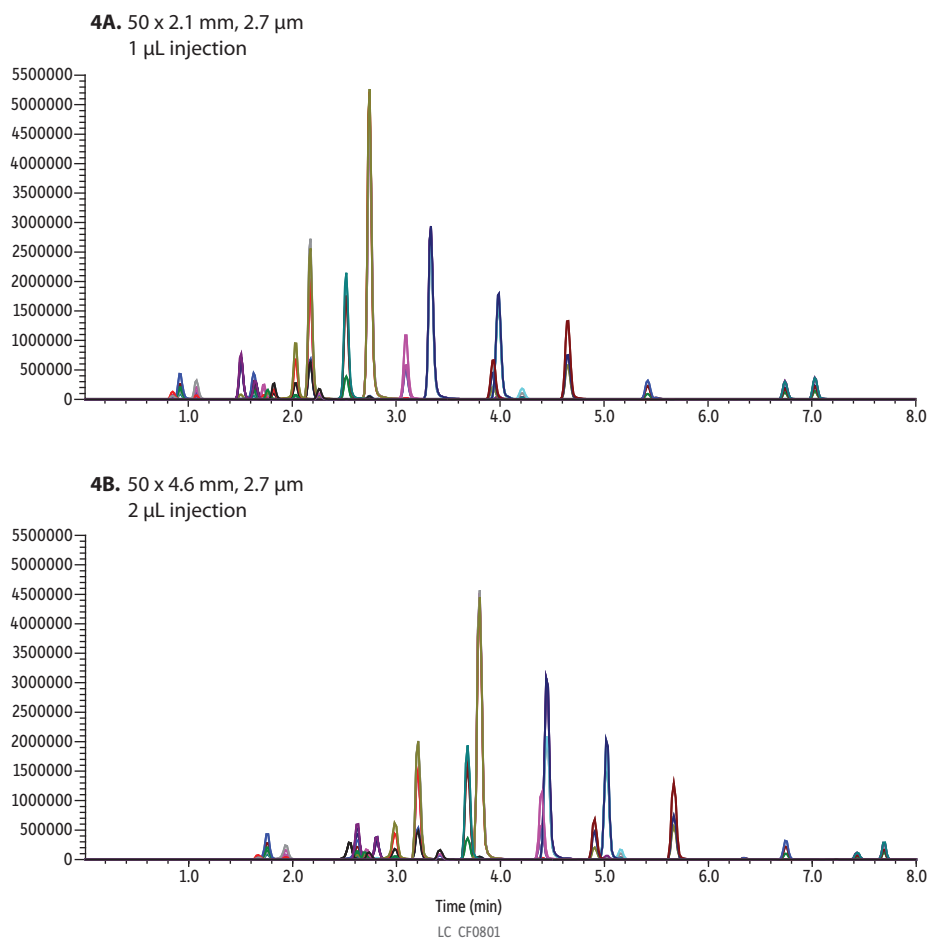


Drugs of Abuse on Raptor Biphenyl (Figure 4 for Biphenyl Advantage Article)



Peaks	Precursor	Product Ion 1	Product Ion 2
1. Morphine	286.2	152.1	165.0
2. Oxycodone	302.1	227.2	198.2
3. Hydromorphone	286.2	184.9	156.9
4. Methamphetamine	150.3	91.1	119.0
5. Noroxycodone	302.1	227.0	197.9
6. Naloxone	328.3	310.1	212.3
7. Phentermine	150.2	91.1	133.1
8. Norhydrocodone	286.1	199.0	128.2
9. Codeine	300.2	152.0	165.1
10. 6-Acetylmorphine	328.2	165.0	211.0
11. Hydrocodone	300.1	199.0	128.0
12. O-Desmethylvenlafaxine	264.1	58.1	107.0
13. Lamotrigine	256.0	211.1	145.0
14. Hydroxybupropion	256.0	130.2	166.0
15. Tramadol	264.2	58.0	77.1
16. 7-Aminoclonazepam	286.1	121.2	250.1
17. Mirtazapine	266.1	195.1	72.1
18. Citalopram	325.2	109.1	262.0
19. Nortriptyline	264.1	91.1	115.2
20. Alpha-hydroxyalprazolam	325.1	297	216.2
21. CBD	315.0	193.0	123.0
22. 9-THC	315.2	193.0	123.2

Column See notes
Temp.: 45 °C
Standard/Sample
Diluent: 50:50 Water:methanol
Conc.: 50 ng/mL
Mobile Phase
A: Water, 0.1% formic acid
B: Methanol, 0.1% formic acid

Time (min)	%A	%B
0.00	90	10
6.00	25	75
7.00	0	100
8.00	0	100
8.01	90	10
9.00	90	10

Flow: 0.6-0.9 mL/min

Detector Shimadzu 8060
Ion Source: Electrospray
Ion Mode: ESI+
Instrument Shimadzu Nexera X2
Sample Preparation Standards were aliquoted into 2 mL, screw-thread vials (cat.# 21143) and capped with short-cap, screw-vial closures (cat.# 24498).

Notes

Figure 4A
Column: Raptor Biphenyl 50 x 2.1 mm, 2.7 μ m (cat.# 9309A52)
Guard: Raptor Biphenyl EXP guard column cartridge 5 mm, 2.1 mm ID, 2.7 μ m (cat.# 9309A0252)
Inj. Vol.: 1 μ L
Flow (mL/min): 0.6

Figure 4B
Column: Raptor Biphenyl 50 x 4.6 mm, 2.7 μ m (cat.# 9309A55)
Guard: Raptor Biphenyl EXP guard column cartridge 5 mm, 4.6 mm ID, 2.7 μ m (cat.# 9309A0250)
Inj. Vol.: 2 μ L
Flow (mL/min): 0.9