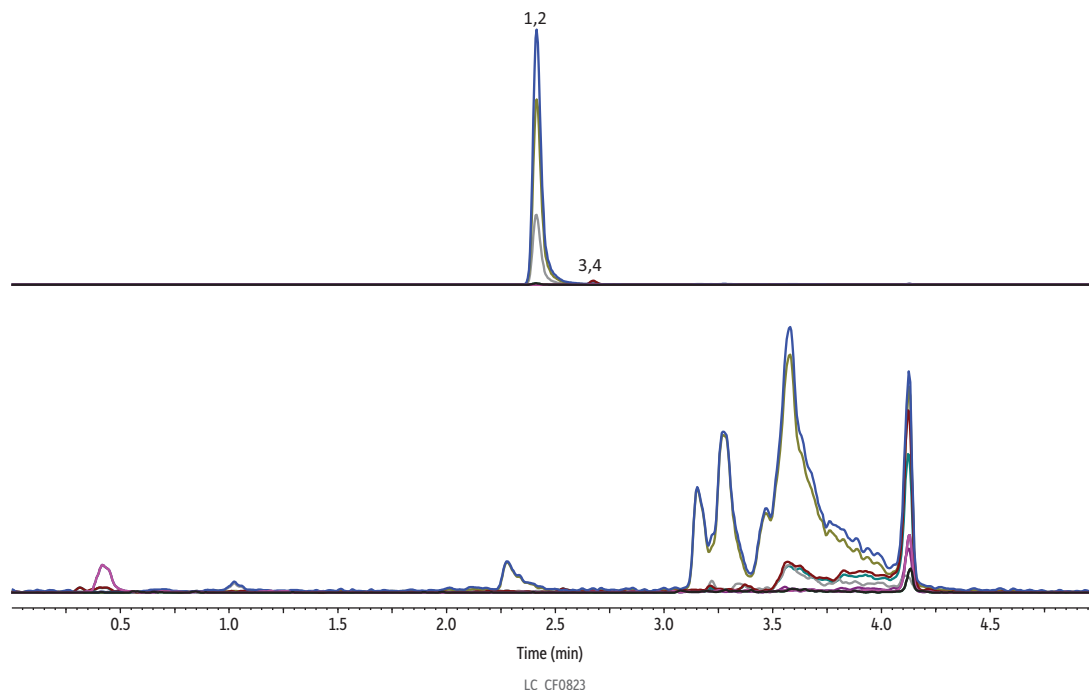


Carryover Study of Raptor C8



Peaks	tr (min)	Precursor Ion	Product Ion 1	Product Ion 2
1. Phosphatidylethanol 16:0/18:2	2.37	699.50	279.25	255.15
2. Phosphatidylethanol 16:0/18:2-d5	2.37	704.50	279.35	-
3. Phosphatidylethanol 16:0/18:1	2.63	701.00	281.25	255.20
4. Phosphatidylethanol 16:0/18:1-d5	2.63	706.50	281.15	-

Column Raptor C8 (cat.# 9303A52)
 Dimensions: 50 mm x 2.1 mm ID
 Particle Size: 2.7 µm
 Pore Size: 90 Å
 Guard Column: Raptor C8 EXP guard column cartridge 5 mm, 2.1 mm ID, 2.7 µm (cat.# 9303A0252)
 Temp.: 30 °C

Standard/Sample
 Diluent: 4:1 2-propanol:tetrahydrofuran
 Conc.: 1000 ng/mL in whole blood
 Inj. Vol.: 5 µL
Mobile Phase
 A: 5 mM ammonium acetate, water
 B: 90:10 Acetonitrile:2-propanol

Time (min)	Flow (mL/min)	%A	%B
0.00	0.6	30	70
2.50	0.6	10	90
3.00	0.6	5	95
3.01	1.0	5	95
3.50	1.0	0	100
3.51	0.6	30	70
5.00	0.6	30	70

Max Pressure: 210 bar
Detector Shimadzu 8060 MS/MS
 Ion Source: Electrospray
 Ion Mode: ESI-
 Mode: MRM
Instrument Shimadzu Nexera X2

Sample Preparation Procedure provided by RedHot Diagnostics:
 The fortified blood sample (50 µL) was mixed with 50 µL of internal standard and 150 µL of 4:1 2-propanol:tetrahydrofuran. The mixture was vortexed for 20 seconds and centrifuged for 10 minutes at 4300 rpm. The supernatant was aliquoted to a 2 mL screw-thread vial (cat.# 21143) with a glass insert (cat.# 21776) and capped with short-cap, screw-vial closure (cat.# 24498). Five microliters was injected for analysis.