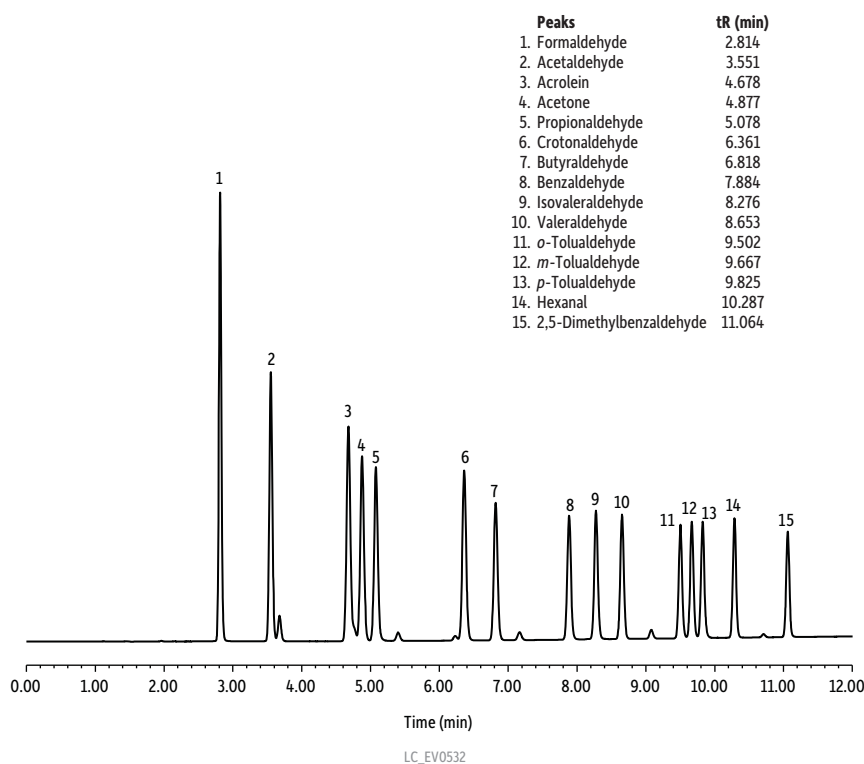


Aldehyde-Ketone-DNPH TO-11A Calibration Mix on Raptor™ C18



Peaks	tR (min)
1. Formaldehyde	2.814
2. Acetaldehyde	3.551
3. Acrolein	4.678
4. Acetone	4.877
5. Propionaldehyde	5.078
6. Crotonaldehyde	6.361
7. Butyraldehyde	6.818
8. Benzaldehyde	7.884
9. Isovaleraldehyde	8.276
10. Valeraldehyde	8.653
11. <i>o</i> -Tolualdehyde	9.502
12. <i>m</i> -Tolualdehyde	9.667
13. <i>p</i> -Tolualdehyde	9.825
14. Hexanal	10.287
15. 2,5-Dimethylbenzaldehyde	11.064

Column Raptor™ C18 (cat.# 9304A65)
Dimensions: 150 mm x 4.6 mm ID
Particle Size: 2.7 µm
Pore Size: 90 Å
Temp.: 30 °C
Sample Aldehyde-ketone-DNPH TO-11A calibration mix (cat.# 31808)
Diluent: Acetonitrile
Conc.: 15 µg/mL
Inj. Vol.: 2 µL

Mobile Phase
A: Water
B: Methanol:acetonitrile (650:50)*

Time (min)	Flow (mL/min)	%A	%B
0.00	0.8	30	70
5.00	0.8	25	75
11.00	0.8	10	90
11.01	0.8	0	100
12.00	0.8	0	100
12.01	0.8	30	70
14.00	0.8	30	70

Detector UV/Vis @ 365, 4.8 nm
Notes *Mobile phase B was prepared by combining 650 mL methanol and 50 mL acetonitrile.